

For Research Use Only

CEP152 Polyclonal antibody, PBS Only

Catalog Number: 21815-1-PBS

Featured Product



Basic Information

Catalog Number:

21815-1-PBS

Size:

100ug, Concentration: 1 mg/ml by Nanodrop;

Source:

Rabbit

Isotype:

IgG

GenBank Accession Number:

NM_014985

GeneID (NCBI):

22995

UNIPROT ID:

O94986

Full Name:

centrosomal protein 152kDa

Calculated MW:

189 kDa

Observed MW:

66 kDa

Purification Method:

Antigen affinity purification

Applications

Tested Applications:

WB, IHC, Indirect ELISA

Species Specificity:

human, mouse

Background Information

CEP152, also named as KIAA0912, is a regulator of genomic integrity and cellular response to DNA damage acting through ATR-mediated checkpoint signaling. It is necessary for centrosome duplication. CEP152 functions as a molecular scaffold facilitating the interaction of PLK4 and CENPJ, two molecules involved in centriole formation. CEP152, ATR and CENPJ control cellular responses to DNA damage. CEP152 has some isoforms with MW 189 kDa, 152 kDa, 110 kDa and 66 kDa.

Storage

Storage:

Store at -80°C.

Storage Buffer:

PBS only, pH7.3

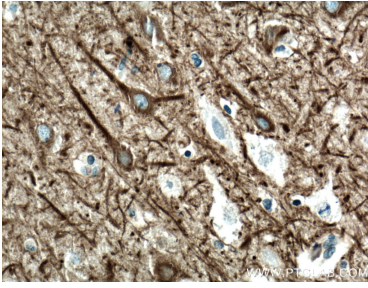
For technical support and original validation data for this product please contact:

T: 1 (888) 4PTGLAB (1-888-478-4522) (toll free in USA), or 1(312) 455-8498 (outside USA)

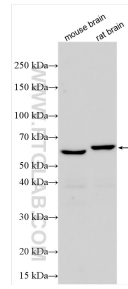
E: proteintech@ptglab.com
W: ptglab.com

This product is exclusively available under Proteintech Group brand and is not available to purchase from any other manufacturer.

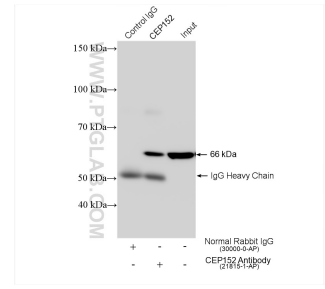
Selected Validation Data



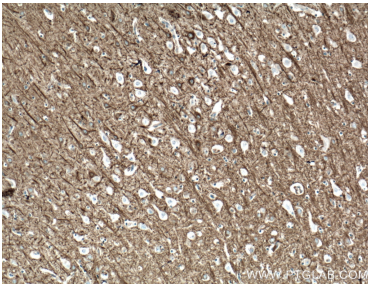
Immunohistochemical analysis of paraffin-embedded human brain tissue slide using 21815-1-AP (CEP152 antibody) at dilution of 1:200 (under 40x lens). Heat mediated antigen retrieval with Tris-EDTA buffer (pH 9.0). This data was developed using the same antibody clone with 21815-1-PBS in a different storage buffer formulation.



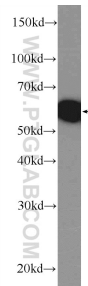
Various lysates were subjected to SDS PAGE followed by western blot with 21815-1-AP (CEP152 antibody) at dilution of 1:1000 incubated at room temperature for 1.5 hours. This data was developed using the same antibody clone with 21815-1-PBS in a different storage buffer formulation.



IP result of anti-CEP152 (IP:21815-1-AP, 4ug; Detection:21815-1-AP 1:2000) with mouse brain tissue lysate 1280 ug. This data was developed using the same antibody clone with 21815-1-PBS in a different storage buffer formulation.



Immunohistochemical analysis of paraffin-embedded human brain tissue slide using 21815-1-AP (CEP152 antibody) at dilution of 1:200 (under 10x lens). Heat mediated antigen retrieval with Tris-EDTA buffer (pH 9.0). This data was developed using the same antibody clone with 21815-1-PBS in a different storage buffer formulation.



mouse brain tissue were subjected to SDS PAGE followed by western blot with 21815-1-AP (CEP152 Antibody) at dilution of 1:300 incubated at room temperature for 1.5 hours. This data was developed using the same antibody clone with 21815-1-PBS in a different storage buffer formulation.