

For Research Use Only

MASP1 Polyclonal antibody

Catalog Number: 21837-1-AP

Featured Product

2 Publications



Basic Information

Catalog Number:

21837-1-AP

Size:

150ul, Concentration: 400 ug/ml by Nanodrop and 220 ug/ml by Bradford method using BSA as the standard;

Source:

Rabbit

Isotype:

IgG

Immunogen Catalog Number:

AG16432

GenBank Accession Number:

BC106945

GeneID (NCBI):

5648

UNIPROT ID:

P48740

Full Name:

mannan-binding lectin serine peptidase 1 (C4/C2 activating component of Ra-reactive factor)

Calculated MW:

728 aa, 82 kDa

Observed MW:

40-70 kDa

Purification Method:

Antigen affinity purification

Recommended Dilutions:

WB 1:200-1:1000

IHC 1:100-1:400

Applications

Tested Applications:

WB, IHC, ELISA

Cited Applications:

WB, IP, IF, IHC

Species Specificity:

human

Cited Species:

human, mouse

Note-IHC: suggested antigen retrieval with TE buffer pH 9.0; (*) Alternatively, antigen retrieval may be performed with citrate buffer pH 6.0

Positive Controls:

WB: HeLa cells,

IHC: human liver cancer tissue,

Notable Publications

Author	Pubmed ID	Journal	Application
Xianzhi Liu	35849032	Hepatology	WB,IHC,IP
Binshan Zhang	36582241	Front Immunol	IF

Storage

Storage:

Store at -20°C. Stable for one year after shipment.

Storage Buffer:

PBS with 0.02% sodium azide and 50% glycerol pH 7.3.

Aliquoting is unnecessary for -20°C storage

*** 20ul sizes contain 0.1% BSA

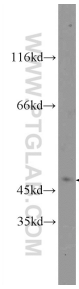
For technical support and original validation data for this product please contact:

T: 1 (888) 4PTGLAB (1-888-478-4522) (toll free in USA), or 1(312) 455-8498 (outside USA)

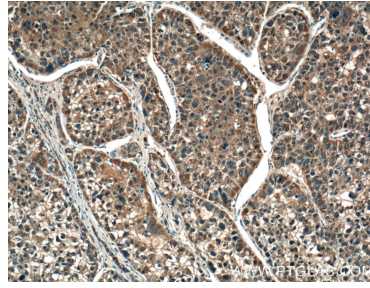
E: proteintech@ptglab.com
W: ptglab.com

This product is exclusively available under Proteintech Group brand and is not available to purchase from any other manufacturer.

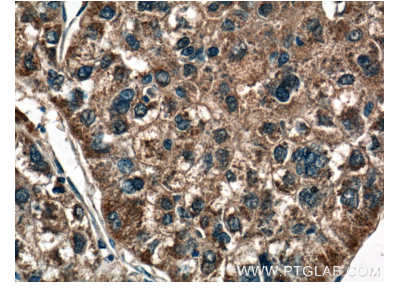
Selected Validation Data



HeLa cells were subjected to SDS PAGE followed by western blot with 21837-1-AP (MASP1 Antibody) at dilution of 1:300 incubated at room temperature for 1.5 hours.



Immunohistochemical analysis of paraffin-embedded human liver cancer tissue slide using 21837-1-AP (MASP1 Antibody) at dilution of 1:200 (under 10x lens).



Immunohistochemical analysis of paraffin-embedded human liver cancer tissue slide using 21837-1-AP (MASP1 Antibody) at dilution of 1:200 (under 40x lens).