

For Research Use Only

CHT1 Polyclonal antibody

Catalog Number: 21848-1-AP **1 Publications**



Basic Information

Catalog Number: 21848-1-AP	GenBank Accession Number: BC111525	Purification Method: Antigen affinity purification
Size: 150ul , Concentration: 700 µg/ml by Nanodrop;	GeneID (NCBI): 60482	Recommended Dilutions: WB 1:200-1:1000 IP 0.5-4.0 ug for 1.0-3.0 mg of total protein lysate IHC 1:20-1:200
Source: Rabbit	Full Name: solute carrier family 5 (choline transporter), member 7	
Isotype: IgG	Calculated MW: 580 aa, 63 kDa	
Immunogen Catalog Number: AG16136	Observed MW: 65-70 kDa	

Applications

Tested Applications: IHC, IP, WB, ELISA	Positive Controls:
Cited Applications: IHC, WB	WB : mouse brain tissue,
Species Specificity: human, mouse, rat	IP : mouse heart tissue,
Cited Species: mouse	IHC : human brain tissue, rat brain tissue
Note-IHC: suggested antigen retrieval with TE buffer pH 9.0; (*) Alternatively, antigen retrieval may be performed with citrate buffer pH 6.0	

Background Information

Notable Publications

Author	Pubmed ID	Journal	Application
Ilenia Severi	38141849	Mol Metab	WB,IHC

Storage

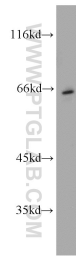
Storage:
Store at -20°C. Stable for one year after shipment.
Storage Buffer:
PBS with 0.02% sodium azide and 50% glycerol pH 7.3.
Aliquoting is unnecessary for -20°C storage

*** 20ul sizes contain 0.1% BSA

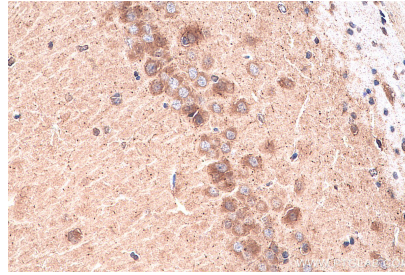
For technical support and original validation data for this product please contact:
T: 1 (888) 4PTGLAB (1-888-478-4522) (toll free in USA), or 1(312) 455-8498 (outside USA)
E: proteintech@ptglab.com
W: ptglab.com

This product is exclusively available under Proteintech Group brand and is not available to purchase from any other manufacturer.

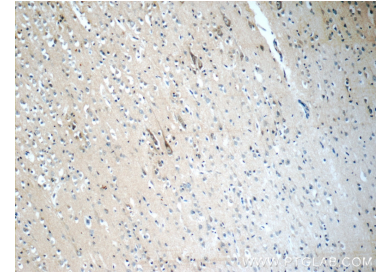
Selected Validation Data



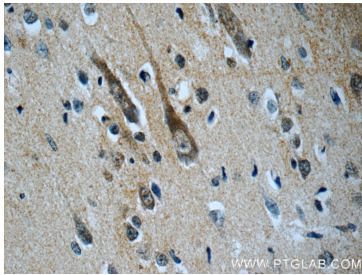
mouse brain tissue were subjected to SDS PAGE followed by western blot with 21848-1-AP (CHT1 antibody) at dilution of 1:300 incubated at room temperature for 1.5 hours.



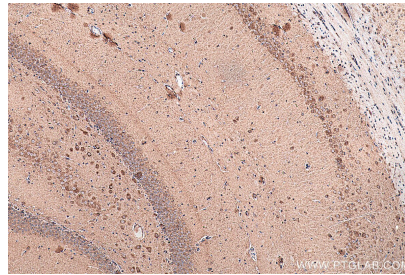
Immunohistochemical analysis of paraffin-embedded rat brain tissue slide using 21848-1-AP (CHT1 antibody) at dilution of 1:200 (under 40x lens). Heat mediated antigen retrieval with Tris-EDTA buffer (pH 9.0).



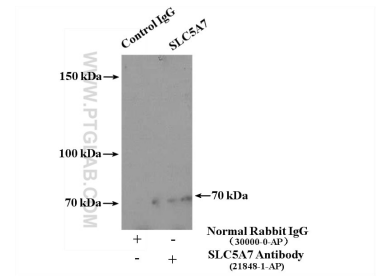
Immunohistochemical analysis of paraffin-embedded human brain slide using 21848-1-AP (CHT1 antibody at dilution of 1:50.



Immunohistochemical analysis of paraffin-embedded human brain slide using 21848-1-AP (CHT1 antibody at dilution of 1:50.



Immunohistochemical analysis of paraffin-embedded rat brain tissue slide using 21848-1-AP (CHT1 antibody) at dilution of 1:200 (under 10x lens). Heat mediated antigen retrieval with Tris-EDTA buffer (pH 9.0).



IP Result of anti-CHT1 (IP:21848-1-AP, 4ug; Detection:21848-1-AP 1:500) with mouse heart tissue lysate 4000ug.