

ROCK1 Polyclonal antibody

Catalog Number: 21850-1-AP

Featured Product

78 Publications

Basic Information

Catalog Number: 21850-1-AP	GenBank Accession Number: BC113114	Purification Method: Antigen affinity purification
Size: 150ul , Concentration: 600 µg/ml by Nanodrop;	GeneID (NCBI): 6093	Recommended Dilutions: WB 1:5000-1:50000 IHC 1:50-1:500 IF 1:50-1:500
Source: Rabbit	Full Name: Rho-associated, coiled-coil containing protein kinase 1	
Isotype: IgG	Calculated MW: 1354 aa, 158 kDa	
Immunogen Catalog Number: AG16317	Observed MW: 150-160 kDa	

Applications

Tested Applications:
IF, IHC, WB, ELISA

Cited Applications:
IF, IHC, WB

Species Specificity:
human, mouse, rat

Cited Species:
human, rat, mouse

Note-IHC: suggested antigen retrieval with TE buffer pH 9.0; (*) Alternatively, antigen retrieval may be performed with citrate buffer pH 6.0

Positive Controls:

WB: A431 cells, HeLa cells, HEK-293T cells, C6 cells, Jurkat cells, NIH/3T3 cells, Ramos cells

IHC: human lymphoma tissue,

IF: HeLa cells,

Background Information

ROCK1, also named as p160ROCK and NY-REN-35, belongs to the protein kinase superfamily and AGC Ser/Thr protein kinase family. ROCK1 phosphorylates and activates DAPIK3, which then regulates myosin light chain phosphatase through phosphorylation of MYPT1 thereby regulating the assembly of the actin cytoskeleton, cell migration, invasiveness of tumor cells, smooth muscle contraction and neurite outgrowth. ROCK1 is required for centromere positioning and centromere-dependent exit from mitosis. It is necessary for apoptotic membrane blebbing. ROCK1 catalyzes the reaction: ATP + a protein = ADP + a phosphoprotein.

Notable Publications

Author	Pubmed ID	Journal	Application
Lichan Mao	36247873	Anal Cell Pathol (Amst)	WB
Xin Chen	32996285	J Cell Mol Med	WB
Kai Cui	27678468	Asian J Androl	WB, IHC

Storage

Storage:

Store at -20°C. Stable for one year after shipment.

Storage Buffer:

PBS with 0.02% sodium azide and 50% glycerol pH 7.3.

Aliquoting is unnecessary for -20°C storage

*** 20ul sizes contain 0.1% BSA

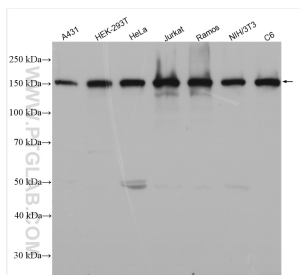
For technical support and original validation data for this product please contact:

T: 1 (888) 4PTGLAB (1-888-478-4522) (toll free in USA), or 1(312) 455-8498 (outside USA)

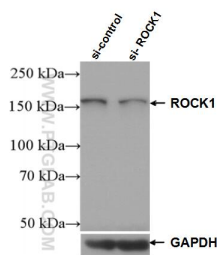
E: proteintech@ptglab.com
W: ptglab.com

This product is exclusively available under Proteintech Group brand and is not available to purchase from any other manufacturer.

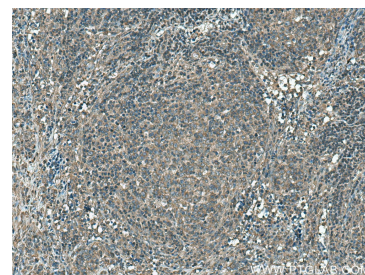
Selected Validation Data



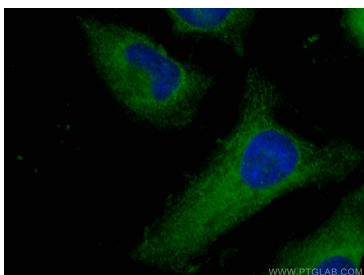
Various lysates were subjected to SDS PAGE followed by western blot with 21850-1-AP (ROCK1 antibody) at dilution of 1:10000 incubated at room temperature for 1.5 hours.



WB result of ROCK1 antibody (21850-1-AP; 1:5000; incubated at room temperature for 1.5 hours) with sh-Control and sh-ROCK1 transfected HeLa cells.



Immunohistochemical analysis of paraffin-embedded human lymphoma tissue slide using 21850-1-AP (ROCK1 antibody) at dilution of 1:200 (under 10x lens). Heat mediated antigen retrieval with Tris-EDTA buffer (pH 9.0).



Immunofluorescent analysis of (-20°C Ethanol) fixed HeLa cells using ROCK1 antibody (21850-1-AP) at dilution of 1:200 and CoraLite®488-Conjugated AffiniPure Goat Anti-Rabbit IgG(H+L).