

For Research Use Only

SOAT2 Polyclonal antibody

Catalog Number: 21852-1-AP

2 Publications



Basic Information

Catalog Number:

21852-1-AP

Size:

150ul, Concentration: 700 ug/ml by Nanodrop and 440 ug/ml by Bradford method using BSA as the standard;

Source:

Rabbit

Isotype:

IgG

Immunogen Catalog Number:

AG16364

GenBank Accession Number:

BC096090

GeneID (NCBI):

8435

UNIPROT ID:

O75908

Full Name:

sterol O-acyltransferase 2

Calculated MW:

522 aa, 60 kDa

Observed MW:

46 kDa

Purification Method:

Antigen affinity purification

Recommended Dilutions:

WB 1:500-1:2000

IHC 1:50-1:500

IF/ICC 1:50-1:500

Applications

Tested Applications:

WB, IHC, IF/ICC, ELISA

Cited Applications:

IHC

Species Specificity:

human

Cited Species:

human, mouse

Note-IHC: suggested antigen retrieval with TE buffer pH 9.0; (*) Alternatively, antigen retrieval may be performed with citrate buffer pH 6.0

Positive Controls:

WB : HeLa cells, L02 cells

IHC : human liver tissue, human small intestine tissue

IF/ICC : HeLa cells,

Background Information

SOAT2, also named as ACAT2, belongs to the membrane-bound acyltransferase family and Sterol o-acyltransferase subfamily. SOAT2 is expressed preferentially in enterocytes of the intestine and hepatocytes of the liver. The role of SOAT2 in generating esterified cholesterol (EC) that is incorporated directly into atherogenic lipoproteins has made it an attractive target in dyslipidemia management and prevention. (PMID: 29246491)

Notable Publications

Author	Pubmed ID	Journal	Application
Huanji Xu	33637695	Cell Death Discov	IHC
Mingjiong Zhang	39805872	Nat Commun	IHC

Storage

Storage:

Store at -20°C. Stable for one year after shipment.

Storage Buffer:

PBS with 0.02% sodium azide and 50% glycerol pH 7.3.

Aliquoting is unnecessary for -20°C storage

*** 20ul sizes contain 0.1% BSA

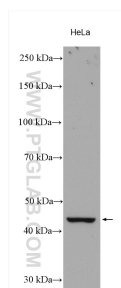
For technical support and original validation data for this product please contact:

T: 1 (888) 4PTGLAB (1-888-478-4522) (toll free in USA), or 1(312) 455-8498 (outside USA)

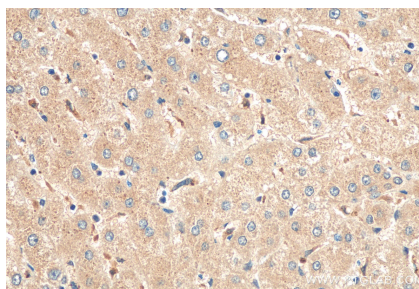
E: proteintech@ptglab.com
W: ptglab.com

This product is exclusively available under Proteintech Group brand and is not available to purchase from any other manufacturer.

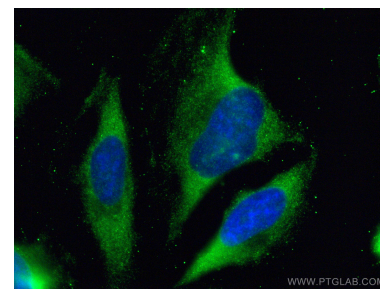
Selected Validation Data



HeLa cells were subjected to SDS PAGE followed by western blot with 21852-1-AP (SOAT2 antibody) at dilution of 1:1000 incubated at room temperature for 1.5 hours.



Immunohistochemical analysis of paraffin-embedded human liver tissue slide using 21852-1-AP (SOAT2 antibody) at dilution of 1:200 (under 40x lens). Heat mediated antigen retrieval with Tris-EDTA buffer (pH 9.0).



Immunofluorescent analysis of (-20°C Ethanol) fixed HeLa cells using SOAT2 antibody (21852-1-AP) at dilution of 1:200 and CoraLite®488-Conjugated Goat Anti-Rabbit IgG(H+L).