

For Research Use Only

cyclin T2 Polyclonal antibody

Catalog Number: 21860-1-AP



Basic Information

Catalog Number: 21860-1-AP	GenBank Accession Number: BC114366	Purification Method: Antigen affinity purification
Size: 150ul, Concentration: 900 µg/ml by Nanodrop;	GeneID (NCBI): 905	Recommended Dilutions: WB 1:1000-1:6000
Source: Rabbit	Full Name: cyclin T2	
Isotype: IgG	Calculated MW: 730 aa, 81 kDa	
Immunogen Catalog Number: AG16514	Observed MW: 70 kDa	

Applications

Tested Applications: WB, ELISA	Positive Controls: WB : HepG2 cells, Jurkat cells, NIH/3T3 cells
Species Specificity: human, mouse	

Background Information

Cyclin T2 (CCNT2) belongs to the cyclin family. CCNT2 is regulatory subunit of the cyclin-dependent kinase pair (CDK9/cyclin T) complex, also called positive transcription elongation factor B (P-TEFb), which is proposed to facilitate the transition from abortive to production elongation by phosphorylating the CTD (carboxy-terminal domain) of the large subunit of RNA polymerase II (RNAP II) (PMID: 9499409, PMID: 15563843). Cyclin T2 is expressed at a relatively high level in freshly isolated monocytes and its level remains constant when the cells are induced to undergo macrophage differentiation (PMID: 21791050). In contrast, Cyclin T1 is expressed at low levels in monocytes and it is strongly up-regulated by a post-transcriptional mechanism when the cells are induced to differentiate to macrophages.

Storage

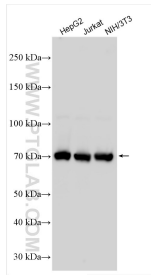
Storage:
Store at -20°C. Stable for one year after shipment.
Storage Buffer:
PBS with 0.02% sodium azide and 50% glycerol pH 7.3.
Aliquoting is unnecessary for -20°C storage

*** 20ul sizes contain 0.1% BSA

For technical support and original validation data for this product please contact:
T: 1 (888) 4PTGLAB (1-888-478-4522) (toll free in USA), or 1(312) 455-8498 (outside USA)
E: proteintech@ptglab.com
W: ptglab.com

This product is exclusively available under Proteintech Group brand and is not available to purchase from any other manufacturer.

Selected Validation Data



Various lysates were subjected to SDS PAGE followed by western blot with 21860-1-AP (cyclin T2 antibody) at dilution of 1:3000 incubated at room temperature for 1.5 hours.