

For Research Use Only

# cyclin T2 Polyclonal antibody, PBS Only

Catalog Number: 21860-1-PBS



## Basic Information

### Catalog Number:

21860-1-PBS

### Size:

100ug, Concentration: 1 mg/ml by Nanodrop;

### Source:

Rabbit

### Isotype:

IgG

### Immunogen Catalog Number:

AG16514

### GenBank Accession Number:

BC114366

### GeneID (NCBI):

905

### UNIPROT ID:

O60583

### Full Name:

cyclin T2

### Calculated MW:

730 aa, 81 kDa

### Observed MW:

70 kDa

### Purification Method:

Antigen affinity purification

## Applications

### Tested Applications:

WB, IHC, Indirect ELISA

### Species Specificity:

human, mouse, rat

## Background Information

Cyclin T2 (CCNT2) belongs to the cyclin family. CCNT2 is regulatory subunit of the cyclin-dependent kinase pair (CDK9/cyclin T) complex, also called positive transcription elongation factor B (P-TEFB), which is proposed to facilitate the transition from abortive to production elongation by phosphorylating the CTD (carboxy-terminal domain) of the large subunit of RNA polymerase II (RNAP II) (PMID: 9499409, PMID: 15563843). Cyclin T2 is expressed at a relatively high level in freshly isolated monocytes and its level remains constant when the cells are induced to undergo macrophage differentiation (PMID: 21791050). In contrast, Cyclin T1 is expressed at low levels in monocytes and it is strongly up-regulated by a post-transcriptional mechanism when the cells are induced to differentiate to macrophages.

## Storage

### Storage:

Store at -80°C.

### Storage Buffer:

PBS Only

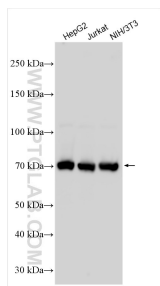
For technical support and original validation data for this product please contact:

T: 1 (888) 4PTGLAB (1-888-478-4522) (toll free in USA), or 1(312) 455-8498 (outside USA)

E: [proteintech@ptglab.com](mailto:proteintech@ptglab.com)  
W: [ptglab.com](http://ptglab.com)

This product is exclusively available under Proteintech Group brand and is not available to purchase from any other manufacturer.

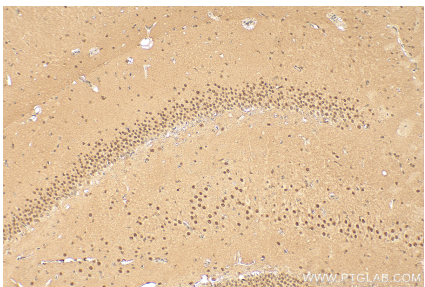
## Selected Validation Data



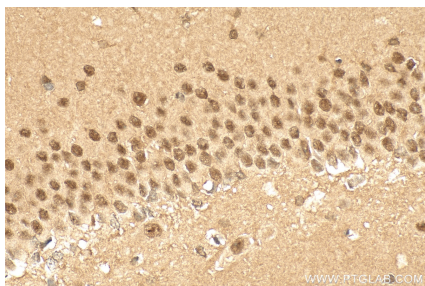
Various lysates were subjected to SDS PAGE followed by western blot with 21860-1-AP (cyclin T2 antibody) at dilution of 1:3000 incubated at room temperature for 1.5 hours. This data was developed using the same antibody clone with 21860-1-PBS in a different storage buffer formulation.



Immunohistochemical analysis of paraffin-embedded mouse brain tissue slide using 21860-1-AP (cyclin T2 antibody) at dilution of 1:200 (under 4010x lens). Heat mediated antigen retrieval with Tris-EDTA buffer (pH 9.0). This data was developed using the same antibody clone with 21860-1-PBS in a different storage buffer formulation.



Immunohistochemical analysis of paraffin-embedded rat brain tissue slide using 21860-1-AP (cyclin T2 antibody) at dilution of 1:200 (under 10x lens). Heat mediated antigen retrieval with Tris-EDTA buffer (pH 9.0). This data was developed using the same antibody clone with 21860-1-PBS in a different storage buffer formulation.



Immunohistochemical analysis of paraffin-embedded rat brain tissue slide using 21860-1-AP (cyclin T2 antibody) at dilution of 1:200 (under 40x lens). Heat mediated antigen retrieval with Tris-EDTA buffer (pH 9.0). This data was developed using the same antibody clone with 21860-1-PBS in a different storage buffer formulation.