

# DUS4L Polyclonal antibody

Catalog Number: 21870-1-AP

## Basic Information

<b>Catalog Number:</b> 21870-1-AP	<b>GenBank Accession Number:</b> BC111774	<b>Purification Method:</b> Antigen affinity purification
<b>Size:</b> 150ul , Concentration: 650 ug/ml by Nanodrop and 493 ug/ml by Bradford method using BSA as the standard;	<b>GeneID (NCBI):</b> 11062	<b>Recommended Dilutions:</b> WB 1:500-1:2000 IHC 1:50-1:500
<b>Source:</b> Rabbit	<b>UNIPROT ID:</b> O95620	
<b>Isotype:</b> IgG	<b>Full Name:</b> dihydrouridine synthase 4-like (S. cerevisiae)	
<b>Immunogen Catalog Number:</b> AG16145	<b>Calculated MW:</b> 317 aa, 36 kDa	
	<b>Observed MW:</b> 22 kDa, 30 kDa	

## Applications

<b>Tested Applications:</b> WB, IHC, ELISA	<b>Positive Controls:</b>
<b>Species Specificity:</b> human, mouse	<b>WB :</b> mouse kidney tissue,
<b>Note-IHC:</b> suggested antigen retrieval with <b>TE buffer pH 9.0; (*) Alternatively, antigen retrieval may be performed with citrate buffer pH 6.0</b>	<b>IHC :</b> human liver cancer tissue,

## Background Information

tRNA-dihydrouridine synthase 4-like belongs to the dus family. It catalyzes the synthesis of dihydrouridine and a modified base found in the D-loop of most tRNAs. Researches showed that DUS4L was also phosphorylated in vitro by a Ca<sup>2+</sup> calmodulin-activated kinase. It has 2 isoforms produced by alternative splicing. One, at 35 kDa, comigrated with a second cAMP-stimulated RIS-ROS phosphoprotein, DUS4L, which was also detected in the cytoskeleton. This antibody recognizes the C-terminal of DUS4L.

## Storage

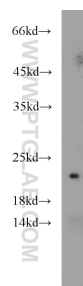
**Storage:**  
Store at -20°C. Stable for one year after shipment.  
**Storage Buffer:**  
PBS with 0.02% sodium azide and 50% glycerol pH 7.3.  
**Aliquoting is unnecessary for -20°C storage**

**\*\*\* 20ul sizes contain 0.1% BSA**

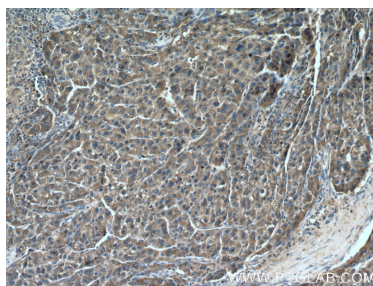
For technical support and original validation data for this product please contact:  
T: 1 (888) 4PTGLAB (1-888-478-4522) (toll free in USA), or 1(312) 455-8498 (outside USA)  
E: [proteintech@ptglab.com](mailto:proteintech@ptglab.com)  
W: [ptglab.com](http://ptglab.com)

This product is exclusively available under Proteintech Group brand and is not available to purchase from any other manufacturer.

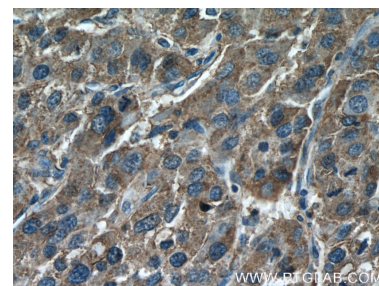
## Selected Validation Data



mouse kidney tissue were subjected to SDS PAGE followed by western blot with 21870-1-AP (DUS4L antibody) at dilution of 1:1000 incubated at room temperature for 1.5 hours.



Immunohistochemical analysis of paraffin-embedded human liver cancer tissue slide using 21870-1-AP (DUS4L Antibody) at dilution of 1:200 (under 10x lens).



Immunohistochemical analysis of paraffin-embedded human liver cancer tissue slide using 21870-1-AP (DUS4L Antibody) at dilution of 1:200 (under 40x lens).