

For Research Use Only

# ATAD3C Polyclonal antibody, PBS Only

Catalog Number: 21881-1-PBS



## Basic Information

**Catalog Number:**

21881-1-PBS

**Size:**

100ug, Concentration: 1 mg/ml by Nanodrop;

**Source:**

Rabbit

**Isotype:**

IgG

**Immunogen Catalog Number:**

AG16422

**GenBank Accession Number:**

BC101211

**GeneID (NCBI):**

219293

**UNIPROT ID:**

Q5T2N8

**Full Name:**

ATPase family, AAA domain containing 3C

**Calculated MW:**

473 aa, 52 kDa

**Observed MW:**

46 kDa

**Purification Method:**

Antigen affinity purification

## Applications

**Tested Applications:**

WB, Indirect ELISA

**Species Specificity:**

human

## Background Information

ATAD3 (ATPase family AAA Domain-containing protein 3) is a mitochondrial transmembrane protein involved in a variety of cellular processes. ATAD3 contains three isoforms: ATAD3A, ATAD3B and ATAD3C. ATAD3C has a negative dominant role in mitochondrial OXPHOS function and its expression regulates ATAD3A in cells (PMID: 38092275). This antibody can detect ATAD3C.

## Storage

**Storage:**

Store at -80°C.

**Storage Buffer:**

PBS only, pH7.3

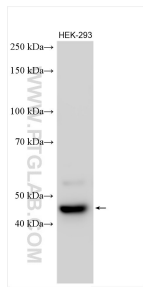
For technical support and original validation data for this product please contact:

T: 1 (888) 4PTGLAB (1-888-478-4522) (toll free in USA), or 1(312) 455-8498 (outside USA)

E: [proteintech@ptglab.com](mailto:proteintech@ptglab.com)  
W: [ptglab.com](http://ptglab.com)

**This product is exclusively available under Proteintech Group brand and is not available to purchase from any other manufacturer.**

## Selected Validation Data



HEK-293 cells were subjected to SDS PAGE followed by western blot with 21881-1-AP (ATAD3C antibody) at dilution of 1:600 incubated at room temperature for 1.5 hours. This data was developed using the same antibody clone with 21881-1-PBS in a different storage buffer formulation.