

For Research Use Only

EDRF1 Polyclonal antibody

Catalog Number: 21883-1-AP



Basic Information

Catalog Number: 21883-1-AP	GenBank Accession Number: BC107479	Purification Method: Antigen affinity purification
Size: 150ul , Concentration: 400 µg/ml by Nanodrop and 373 µg/ml by Bradford method using BSA as the standard;	GeneID (NCBI): 26098	Recommended Dilutions: WB 1:1000-1:4000 IHC 1:20-1:200
Source: Rabbit	Full Name: chromosome 10 open reading frame 137	
Isotype: IgG	Calculated MW: 1238 aa, 139 kDa	
Immunogen Catalog Number: AG16441	Observed MW: 140-160 kDa	

Applications

Tested Applications:

IHC, WB, ELISA

Species Specificity:

human, mouse, rat

Note-IHC: suggested antigen retrieval with TE buffer pH 9.0; (*) Alternatively, antigen retrieval may be performed with citrate buffer pH 6.0

Positive Controls:

WB : HeLa cells, human brain tissue, PC-3 cells, HEK-293 cells, mouse brain tissue, MCF-7 cells

IHC : human testis tissue, human placenta tissue

Background Information

EDRF1, also named as C10orf137, is a transcription factor involved in erythroid differentiation. It regulates alpha- and gamma-globin gene synthesis by modulating DNA-binding activity of GATA-1 transcription factor. EDRF1 has four isoforms with MW 66 kDa, 89 kDa and 135-140 kDa.

Storage

Storage:

Store at -20°C. Stable for one year after shipment.

Storage Buffer:

PBS with 0.02% sodium azide and 50% glycerol pH 7.3.

Aliquoting is unnecessary for -20°C storage

*** 20ul sizes contain 0.1% BSA

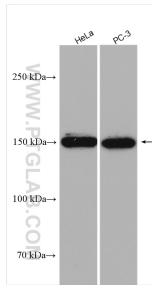
For technical support and original validation data for this product please contact:

T: 1 (888) 4PTGLAB (1-888-478-4522) (toll free in USA), or 1(312) 455-8498 (outside USA)

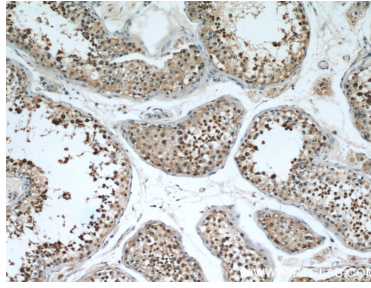
E: proteintech@ptglab.com
W: ptglab.com

This product is exclusively available under Proteintech Group brand and is not available to purchase from any other manufacturer.

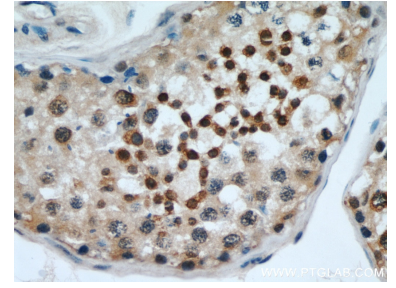
Selected Validation Data



Various lysates were subjected to SDS PAGE followed by western blot with 21883-1-AP (EDRF1 antibody) at dilution of 1:2000 incubated at room temperature for 1.5 hours.



Immunohistochemical analysis of paraffin-embedded human testis using 21883-1-AP (EDRF1 antibody) at dilution of 1:50 (under 10x lens).



Immunohistochemical analysis of paraffin-embedded human testis using 21883-1-AP (EDRF1 antibody) at dilution of 1:50 (under 40x lens).