

For Research Use Only

DELE1 Polyclonal antibody, PBS Only

Catalog Number: 21904-1-PBS



Basic Information

Catalog Number: 21904-1-PBS	GenBank Accession Number: BC007855	Purification Method: Antigen affinity purification
Size: 100ug, Concentration: 1 mg/ml by Nanodrop;	GeneID (NCBI): 9812	
Source: Rabbit	UNIPROT ID: Q14154	
Isotype: IgG	Full Name: KIAA0141	
Immunogen Catalog Number: AG14615	Calculated MW: 515 aa, 56 kDa	
	Observed MW: 56 kDa	

Applications

Tested Applications:
WB, Indirect ELISA

Species Specificity:
human, mouse

Background Information

DELE1, also known as KIAA0141, is a 515 amino acid protein, which localizes in Mitochondrion and is detected in liver, skeletal muscle, kidney, pancreas, spleen, thyroid, testis, ovary, small intestine and colon. DELE1 is essential for the induction of death receptor-mediated apoptosis through the regulation of caspase activation. Mitochondrial malfunction needs to be relayed to the cytosol, where an integrated stress response is triggered by the phosphorylation of eukaryotic translation initiation factor 2 α (eIF2 α) in mammalian cells. eIF2 α phosphorylation is mediated by the four eIF2 α kinases GCN2, HRI, PERK and PKR, which are activated by diverse types of cellular stress. OMA1, a mitochondrial stress-activated protease; and DELE1, a little-characterized protein that we found was associated with the inner mitochondrial membrane. Mitochondrial stress stimulates OMA1-dependent cleavage of DELE1 and leads to the accumulation of DELE1 in the cytosol, where it interacts with HRI and activates the eIF2 α kinase activity of HRI. In addition, DELE1 is required for ATF4 translation downstream of eIF2 α phosphorylation.

Storage

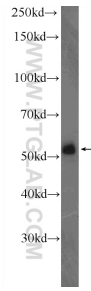
Storage:
Store at -80°C.

Storage Buffer:
PBS Only

For technical support and original validation data for this product please contact:
T: 1 (888) 4PTGLAB (1-888-478-4522) (toll free in USA), or 1(312) 455-8498 (outside USA)
E: proteintech@ptglab.com
W: ptglab.com

This product is exclusively available under Proteintech Group brand and is not available to purchase from any other manufacturer.

Selected Validation Data



mouse lung tissue were subjected to SDS PAGE followed by western blot with 21904-1-AP (KIAA0141 Antibody) at dilution of 1:300 incubated at room temperature for 1.5 hours. This data was developed using the same antibody clone with 21904-1-PBS in a different storage buffer formulation.