

For Research Use Only

LGI3 Polyclonal antibody

Catalog Number: 21919-1-AP



Basic Information

Catalog Number: 21919-1-AP	GenBank Accession Number: BC142997	Purification Method: Antigen affinity purification
Size: 150ul , Concentration: 650 µg/ml by Nanodrop and 407 µg/ml by Bradford method using BSA as the standard;	GeneID (NCBI): 203190	Recommended Dilutions: WB 1:500-1:2000 IHC 1:20-1:200 IF 1:20-1:200
Source: Rabbit	Full Name: leucine-rich repeat LGI family, member 3	
Isotype: IgG	Calculated MW: 548 aa, 62 kDa	
Immunogen Catalog Number: AG16257	Observed MW: 55-62 kDa	

Applications

Tested Applications:
FC, IF, IHC, WB, ELISA

Species Specificity:
human, mouse, rat

Note-IHC: suggested antigen retrieval with TE buffer pH 9.0; (*) Alternatively, antigen retrieval may be performed with citrate buffer pH 6.0

Positive Controls:

WB: HepG2 cells, mouse lung tissue, A549 cells, mouse liver tissue, SMMC-7721 cells

IHC: human lung tissue, human brain tissue

IF: HepG2 cells,

Background Information

Storage

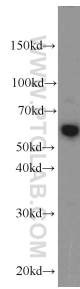
Storage:
Store at -20°C. Stable for one year after shipment.
Storage Buffer:
PBS with 0.02% sodium azide and 50% glycerol pH 7.3.
Aliquoting is unnecessary for -20°C storage

*** 20ul sizes contain 0.1% BSA

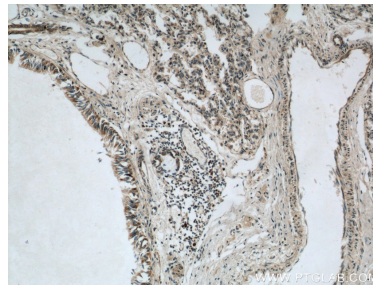
For technical support and original validation data for this product please contact:
T: 1 (888) 4PTGLAB (1-888-478-4522) (toll free in USA), or 1(312) 455-8498 (outside USA) E: proteintech@ptglab.com W: ptglab.com

This product is exclusively available under Proteintech Group brand and is not available to purchase from any other manufacturer.

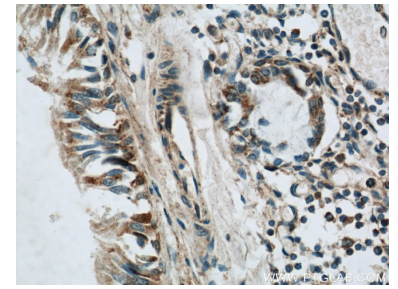
Selected Validation Data



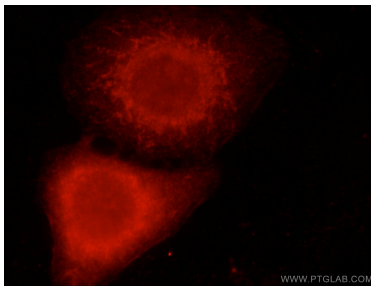
HepG2 cells were subjected to SDS PAGE followed by western blot with 21919-1-AP (LGI3 antibody) at dilution of 1:1000 incubated at room temperature for 1.5 hours.



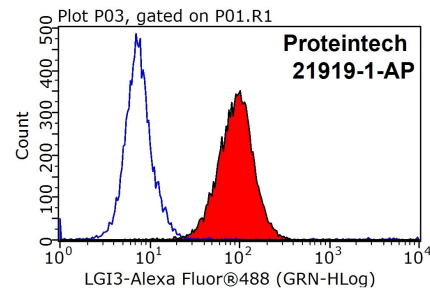
Immunohistochemical analysis of paraffin-embedded human lung using 21919-1-AP (LGI3 antibody) at dilution of 1:50 (under 10x lens).



Immunohistochemical analysis of paraffin-embedded human lung using 21919-1-AP (LGI3 antibody) at dilution of 1:50 (under 40x lens).



Immunofluorescent analysis of HepG2 cells using 21919-1-AP (LGI3 Antibody) at dilution of 1:50 and Rhodamine-labeled goat anti-Rabbit IgG (red).



1×10^6 HepG2 cells were stained with 0.2ug LGI3 antibody (21919-1-AP, red) and control antibody (blue). Fixed with 90% MeOH blocked with 3% BSA (30 min). Alexa Fluor 488-conjugated AffiniPure Goat Anti-Rabbit IgG(H+L) with dilution 1:1000.