

For Research Use Only

CHRNA Polyclonal antibody, PBS Only

Catalog Number: 21928-1-PBS



Basic Information

Catalog Number:

21928-1-PBS

Size:

100ug, Concentration: 1 mg/ml by Nanodrop;

Source:

Rabbit

Isotype:

IgG

Immunogen Catalog Number:

AG16505

GenBank Accession Number:

BC111802

GeneID (NCBI):

1146

UNIPROT ID:

P07510

Full Name:

cholinergic receptor, nicotinic, gamma

Calculated MW:

465 aa, 52 kDa

Observed MW:

58 kDa

Purification Method:

Antigen affinity purification

Applications

Tested Applications:

WB, Indirect ELISA

Species Specificity:

human

Background Information

Acetylcholine receptor subunit gamma is a protein that in humans is encoded by the CHRNA gene. The mammalian muscle-type acetylcholine receptor is a transmembrane pentameric glycoprotein with two alpha subunits, one beta, one delta, and one epsilon (in adult skeletal muscle) or gamma (in fetal and denervated muscle) subunit. This gene, which encodes the gamma subunit, is expressed prior to the thirty-third week of gestation in humans. The gamma subunit of the acetylcholine receptor plays a role in neuromuscular organogenesis and ligand binding and disruption of gamma subunit expression prevents the correct localization of the receptor in cell membranes. Mutations in this gene cause Escobar syndrome and a lethal form of multiple pterygium syndrome. Muscle-type acetylcholine receptor is the major antigen in the autoimmune disease myasthenia gravis.

Storage

Storage:

Store at -80°C.

Storage Buffer:

PBS Only

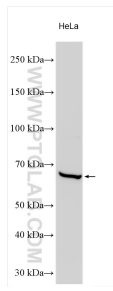
For technical support and original validation data for this product please contact:

T: 1 (888) 4PTGLAB (1-888-478-4522) (toll free in USA), or 1(312) 455-8498 (outside USA)

E: proteintech@ptglab.com
W: ptglab.com

This product is exclusively available under Proteintech Group brand and is not available to purchase from any other manufacturer.

Selected Validation Data



Various lysates were subjected to SDS PAGE followed by western blot with 21928-1-AP (CHRNA antibody) at dilution of 1:2000 incubated at room temperature for 1.5 hours. This data was developed using the same antibody clone with 21928-1-PBS in a different storage buffer formulation.