

For Research Use Only

RSPH4A Polyclonal antibody, PBS Only

Catalog Number: 21931-1-PBS



Basic Information

Catalog Number:

21931-1-PBS

Size:

100ug, Concentration: 1 mg/ml by Nanodrop;

Source:

Rabbit

Isotype:

IgG

Immunogen Catalog Number:

AG16551

GenBank Accession Number:

BC106949

GeneID (NCBI):

345895

UNIPROT ID:

Q5TD94

Full Name:

radial spoke head 4 homolog A (Chlamydomonas)

Calculated MW:

716 aa, 81 kDa

Observed MW:

80 kDa

Purification Method:

Antigen affinity purification

Applications

Tested Applications:

WB, Indirect ELISA

Species Specificity:

human, mouse, rat

Background Information

RSPH4A, also known as RSHL3, belongs to the radial spoke family. RSPH4A is the component of the axonemal radial spoke head which plays an important role in ciliary motility. Mutations in RSPH4A cause primary ciliary dyskinesia 1, a disease arising from dysmotility of motile cilia and sperm (PMID: 19200523, 23798057).

Storage

Storage:

Store at -80°C.

Storage Buffer:

PBS Only

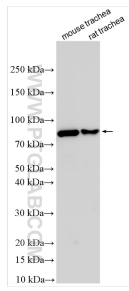
For technical support and original validation data for this product please contact:

T: 1 (888) 4PTGLAB (1-888-478-4522) (toll free in USA), or 1(312) 455-8498 (outside USA)

E: proteintech@ptglab.com
W: ptglab.com

This product is exclusively available under Proteintech Group brand and is not available to purchase from any other manufacturer.

Selected Validation Data



Various lysates were subjected to SDS PAGE followed by western blot with 21931-1-AP (RSPH4A antibody) at dilution of 1:1500 incubated at room temperature for 1.5 hours. This data was developed using the same antibody clone with 21931-1-PBS in a different storage buffer formulation.