

For Research Use Only

SLC14A2 Polyclonal antibody

Catalog Number: 21932-1-AP



Basic Information

Catalog Number:

21932-1-AP

Size:

150ul, Concentration: 350 ug/ml by Nanodrop;

Source:

Rabbit

Isotype:

IgG

Immunogen Catalog Number:

AG16561

GenBank Accession Number:

BC110445

GeneID (NCBI):

8170

UNIPROT ID:

Q15849

Full Name:

solute carrier family 14 (urea transporter), member 2

Calculated MW:

920 aa, 101 kDa

Observed MW:

43 kDa, 101 kDa

Purification Method:

Antigen affinity purification

Recommended Dilutions:

WB 1:1000-1:4000

Applications

Tested Applications:

WB, ELISA

Species Specificity:

human, mouse

Positive Controls:

WB : mouse brain tissue, human brain tissue

Background Information

SLC14A2, also known as human urea transporter -2 (HUT2), is the human homolog of UT-A2 and the only kidney-specific urea transporter cloned in humans. Urea transport in the kidney is mediated by a family of transporter proteins, including renal urea transporters (UT-A) and erythrocyte urea transporters (UT-B). UT-A proteins expressed in the kidney play a critical role in generating the hypertonic medulla, which is an integral component of the urinary concentrating mechanism (PMID: 11590132, 11880324). The 4.2-kb HUT-A1 cDNA encodes a 920-amino acid peptide, which is 89% identical to the rat UT-A1 protein (PMID: 11502588).

Storage

Storage:

Store at -20°C. Stable for one year after shipment.

Storage Buffer:

PBS with 0.02% sodium azide and 50% glycerol pH 7.3.

Aliquoting is unnecessary for -20°C storage

*** 20ul sizes contain 0.1% BSA

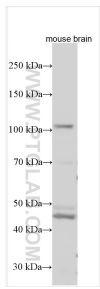
For technical support and original validation data for this product please contact:

T: 1 (888) 4PTGLAB (1-888-478-4522) (toll free in USA), or 1(312) 455-8498 (outside USA)

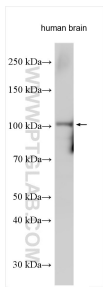
E: proteintech@ptglab.com
W: ptglab.com

This product is exclusively available under Proteintech Group brand and is not available to purchase from any other manufacturer.

Selected Validation Data



Various lysates were subjected to SDS PAGE followed by western blot with 21932-1-AP (SLC14A2 antibody) at dilution of 1:2000 incubated at room temperature for 1.5 hours.



Various lysates were subjected to SDS PAGE followed by western blot with 21932-1-AP (SLC14A2 antibody) at dilution of 1:1500 incubated at room temperature for 1.5 hours.