

For Research Use Only

SH3BGRL2 Polyclonal antibody

Catalog Number: 21944-1-AP

Featured Product

2 Publications



Basic Information

Catalog Number: 21944-1-AP	GenBank Accession Number: BC040489	Purification Method: Antigen affinity purification
Size: 150ul, Concentration: 600 µg/ml by Nanodrop and 467 µg/ml by Bradford method using BSA as the standard;	GeneID (NCBI): 83699	Recommended Dilutions: WB 1:200-1:1000 IHC 1:50-1:500 IF 1:50-1:500
Source: Rabbit	Full Name: SH3 domain binding glutamic acid-rich protein like 2	
Isotype: IgG	Calculated MW: 107 aa, 12 kDa	
Immunogen Catalog Number: AG16638	Observed MW: 12 kDa	

Applications

Tested Applications:

IF, IHC, WB, ELISA

Cited Applications:

WB

Species Specificity:

human, mouse

Cited Species:

human

Note-IHC: suggested antigen retrieval with TE buffer pH 9.0; (*) Alternatively, antigen retrieval may be performed with citrate buffer pH 6.0

Positive Controls:

WB: mouse brain tissue, mouse liver tissue, human placenta tissue

IHC: human liver tissue, human placenta tissue, mouse brain tissue

IF: HEK-293 cells,

Background Information

Notable Publications

Author	Pubmed ID	Journal	Application
Shanqi Guo	32431616	Front Pharmacol	WB
Dou-Dou Li	32368399	Am J Cancer Res	WB

Storage

Storage:

Store at -20°C. Stable for one year after shipment.

Storage Buffer:

PBS with 0.02% sodium azide and 50% glycerol pH 7.3.

Aliquoting is unnecessary for -20°C storage

*** 20ul sizes contain 0.1% BSA

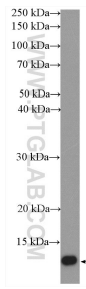
For technical support and original validation data for this product please contact:

T: 1 (888) 4PTGLAB (1-888-478-4522) (toll free in USA), or 1(312) 455-8498 (outside USA)

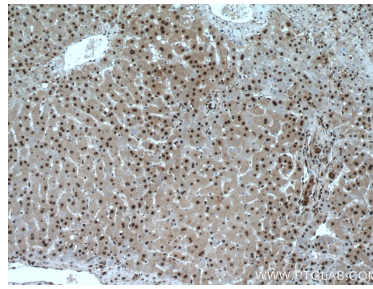
E: proteintech@ptglab.com
W: ptglab.com

This product is exclusively available under Proteintech Group brand and is not available to purchase from any other manufacturer.

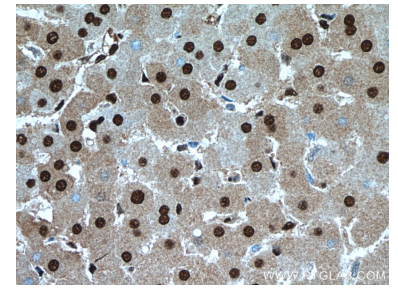
Selected Validation Data



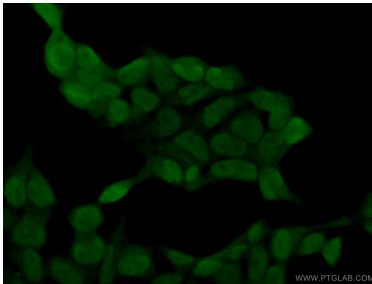
mouse brain tissue were subjected to SDS PAGE followed by western blot with 21944-1-AP (SH3BGRL2 antibody) at dilution of 1:300 incubated at room temperature for 1.5 hours.



Immunohistochemical analysis of paraffin-embedded human liver tissue slide using 21944-1-AP (SH3BGRL2 antibody) at dilution of 1:200 (under 10x lens).



Immunohistochemical analysis of paraffin-embedded human liver tissue slide using 21944-1-AP (SH3BGRL2 antibody) at dilution of 1:200 (under 40x lens).



Immunofluorescent analysis of (4% PFA) fixed HEK-293 cells using 21944-1-AP (SH3BGRL2 antibody) at dilution of 1:50 and Alexa Fluor 488-conjugated AffiniPure Goat Anti-Rabbit IgG(H+L).