

For Research Use Only

# SP1 Polyclonal antibody

Catalog Number: 21962-1-AP

Featured Product

127 Publications



## Basic Information

### Catalog Number:

21962-1-AP

### Size:

150ul, Concentration: 700 ug/ml by Nanodrop;

### Source:

Rabbit

### Isotype:

IgG

### Immunogen Catalog Number:

AG16720

### GenBank Accession Number:

BC062539

### GeneID (NCBI):

6667

### ENSEMBL Gene ID:

ENSG00000185591

### UNIPROT ID:

P08047

### Full Name:

Sp1 transcription factor

### Calculated MW:

785 aa, 81 kDa

### Observed MW:

95-106 kDa

### Purification Method:

Antigen affinity purification

### Recommended Dilutions:

WB 1:2000-1:16000

IP 0.5-4.0 ug for 1.0-3.0 mg of total protein lysate

IHC 1:50-1:500

IF/ICC 1:20-1:200

## Applications

### Tested Applications:

WB, IHC, IF/ICC, IP, ELISA

### Cited Applications:

WB, IHC, IF, IP, CoIP, ChIP

### Species Specificity:

human, mouse, rat, monkey

### Cited Species:

human, mouse, rat, pig, monkey, sheep

**Note-IHC: suggested antigen retrieval with TE buffer pH 9.0; (\*) Alternatively, antigen retrieval may be performed with citrate buffer pH 6.0**

### Positive Controls:

**WB**: Jurkat cells, A431 cells, HEK-293 cells, HeLa cells, K-562 cells

**IP**: A431 cells,

**IHC**: human lung cancer tissue, human colon tissue, human stomach cancer tissue

**IF/ICC**: HeLa cells,

## Background Information

The transcription factor Sp1 is a C2H2 zinc-finger protein that is involved in the regulation of a wide variety of genes, including housekeeping genes and tumor-developing genes. It is associated with tumor development, growth, and metastasis [PMID: 16209919]. It regulates the expression of a large number of genes involved in a variety of processes such as cell growth, apoptosis, differentiation and immune responses. Besides, it has a role in modulating the cellular response to DNA damage, recruiting SMARCA4/BRG1 on the c-FOS promoter, regulation of FE65 gene expression [PMID:11371615,16332679]. SP1 is detected with MW 95-105 kDa and 65 kDa in this paper [PMID: 10618488].

## Notable Publications

Author	Pubmed ID	Journal	Application
Yongchun Yu	36183674	Transl Oncol	WB, ChIP
Faisal Aziz	26427350	Toxicol In Vitro	WB, IHC
Liping Wang	34559939	IUBMB Life	WB

## Storage

### Storage:

Store at -20°C. Stable for one year after shipment.

### Storage Buffer:

PBS with 0.02% sodium azide and 50% glycerol pH 7.3.

Aliquoting is unnecessary for -20°C storage

\*\*\* 20ul sizes contain 0.1% BSA

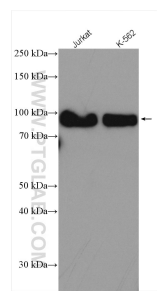
For technical support and original validation data for this product please contact:

T: 1 (888) 4PTGLAB (1-888-478-4522) (toll free in USA), or 1(312) 455-8498 (outside USA)

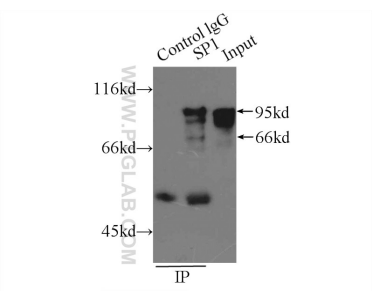
E: proteintech@ptglab.com  
W: ptglab.com

This product is exclusively available under Proteintech Group brand and is not available to purchase from any other manufacturer.

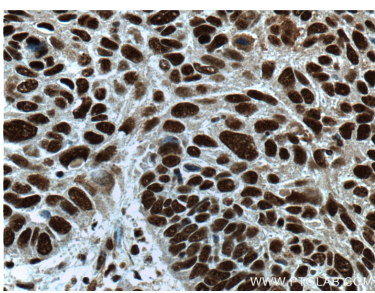
Selected Validation Data



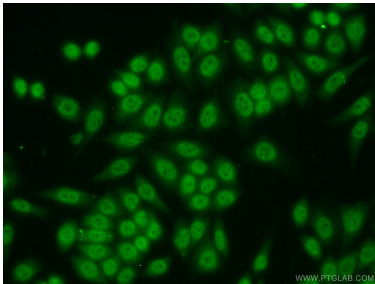
Various lysates were subjected to SDS PAGE followed by western blot with 21962-1-AP (SP1 antibody) at dilution of 1:8000 incubated at room temperature for 1.5 hours.



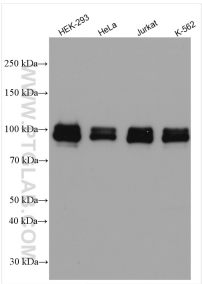
IP result of anti-SP1 (IP: 21962-1-AP, 6ug; Detection: 21962-1-AP 1:500) with A431 cells lysate 2500ug.



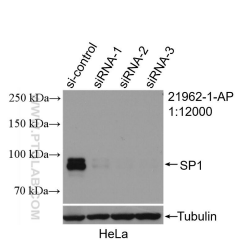
Immunohistochemical analysis of paraffin-embedded human lung cancer tissue slide using 21962-1-AP (SP1 Antibody) at dilution of 1:200 (under 40x lens).



Immunofluorescent analysis of HeLa cells using 21962-1-AP (SP1 antibody) at dilution of 1:50 and Alexa Fluor 488-conjugated Goat Anti-Rabbit IgG(H+L).



Various lysates were subjected to SDS PAGE followed by western blot with 21962-1-AP (SP1 antibody) at dilution of 1:8000 incubated at room temperature for 1.5 hours.



WB result of SP1 antibody (21962-1-AP; 1:12000; incubated at room temperature for 1.5 hours) with sh-Control and sh-SP1 transfected HeLa cells.