

For Research Use Only

LMO2 Polyclonal antibody

Catalog Number: 21966-1-AP

1 Publications



Basic Information

Catalog Number:

21966-1-AP

Size:

150ul, Concentration: 400 ug/ml by Nanodrop and 247 ug/ml by Bradford method using BSA as the standard;

Source:

Rabbit

Isotype:

IgG

Immunogen Catalog Number:

AG16795

GenBank Accession Number:

BC034041

GeneID (NCBI):

4005

UNIPROT ID:

P25791

Full Name:

LIM domain only 2 (rhombotin-like 1)

Calculated MW:

227 aa, 25 kDa

Observed MW:

17-25 kDa

Purification Method:

Antigen affinity purification

Recommended Dilutions:

WB 1:500-1:2000

Applications

Tested Applications:

WB, ELISA

Cited Applications:

WB

Species Specificity:

human, mouse

Cited Species:

zebrafish

Positive Controls:

WB : mouse heart tissue,

Notable Publications

Author	Pubmed ID	Journal	Application
WenYe Liu	38940293	Development	WB

Storage

Storage:

Store at -20°C. Stable for one year after shipment.

Storage Buffer:

PBS with 0.02% sodium azide and 50% glycerol pH 7.3.

Aliquoting is unnecessary for -20°C storage

*** 20ul sizes contain 0.1% BSA

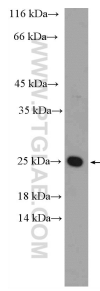
For technical support and original validation data for this product please contact:

T: 1 (888) 4PTGLAB (1-888-478-4522) (toll free in USA), or 1(312) 455-8498 (outside USA)

E: proteintech@ptglab.com
W: ptglab.com

This product is exclusively available under Proteintech Group brand and is not available to purchase from any other manufacturer.

Selected Validation Data



mouse heart tissue were subjected to SDS PAGE followed by western blot with 21966-1-AP (LMO2 Antibody) at dilution of 1:1000 incubated at room temperature for 1.5 hours.