

For Research Use Only

BCL2L12 Polyclonal antibody

Catalog Number: 21969-1-AP



Basic Information

Catalog Number: 21969-1-AP	GenBank Accession Number: BC104005	Purification Method: Antigen affinity purification
Size: 150ul , Concentration: 600 ug/ml by Nanodrop and 393 ug/ml by Bradford method using BSA as the standard;	GeneID (NCBI): 83596	Recommended Dilutions: WB 1:500-1:2000 IHC 1:20-1:200 IF/ICC 1:50-1:500
Source: Rabbit	UNIPROT ID: Q9HB09	
Isotype: IgG	Full Name: BCL2-like 12 (proline rich)	
Immunogen Catalog Number: AG16856	Calculated MW: 334 aa, 37 kDa	
	Observed MW: 32 kDa	

Applications

Tested Applications: WB, IHC, IF/ICC, ELISA	Positive Controls:
Species Specificity: human	WB : PC-3 cells,
Note-IHC: suggested antigen retrieval with TE buffer pH 9.0; (*) Alternatively, antigen retrieval may be performed with citrate buffer pH 6.0	IHC : human breast cancer tissue,
	IF/ICC : PC-3 cells,

Storage

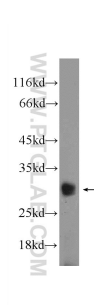
Storage:
Store at -20°C. Stable for one year after shipment.
Storage Buffer:
PBS with 0.02% sodium azide and 50% glycerol pH 7.3.
Aliquoting is unnecessary for -20°C storage

*** 20ul sizes contain 0.1% BSA

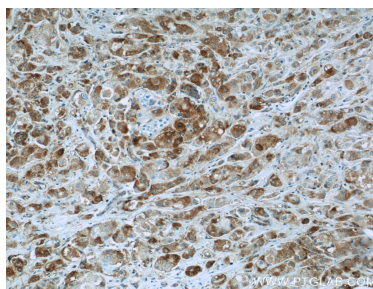
For technical support and original validation data for this product please contact:
T: 1 (888) 4PTGLAB (1-888-478-4522) (toll free in USA), or 1(312) 455-8498 (outside USA)
E: proteintech@ptglab.com
W: ptglab.com

This product is exclusively available under Proteintech Group brand and is not available to purchase from any other manufacturer.

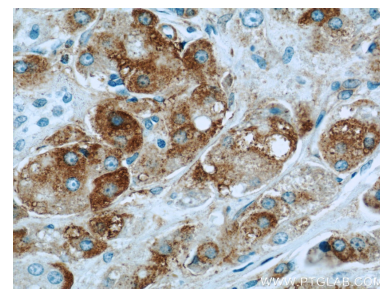
Selected Validation Data



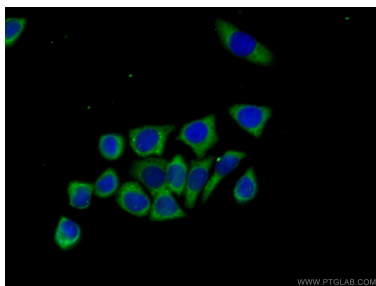
PC-3 cells were subjected to SDS PAGE followed by western blot with 21969-1-AP (BCL2L12 Antibody) at dilution of 1:1000 incubated at room temperature for 1.5 hours.



Immunohistochemical analysis of paraffin-embedded human breast cancer slide using 21969-1-AP (BCL2L12 Antibody) at dilution of 1:50.



Immunohistochemical analysis of paraffin-embedded human breast cancer slide using 21969-1-AP (BCL2L12 Antibody) at dilution of 1:50.



Immunofluorescent analysis of (-20°C Ethanol) fixed PC-3 cells using 21969-1-AP (BCL2L12 antibody) at dilution of 1:50 and Alexa Fluor 488-conjugated Goat Anti-Rabbit IgG(H+L).