

For Research Use Only

KLHL34 Polyclonal antibody

Catalog Number: 21981-1-AP



Basic Information

Catalog Number: 21981-1-AP	GenBank Accession Number: BC109031	Purification Method: Antigen affinity purification
Size: 150ul , Concentration: 500 ug/ml by Nanodrop and 440 ug/ml by Bradford method using BSA as the standard;	GeneID (NCBI): 257240	Recommended Dilutions: WB 1:500-1:1000 IHC 1:50-1:500
Source: Rabbit	UNIPROT ID: Q8N239	
Isotype: IgG	Full Name: kelch-like 34 (Drosophila)	
Immunogen Catalog Number: AG16001	Calculated MW: 644 aa, 71 kDa	
	Observed MW: 71 kDa	

Applications

Tested Applications: WB, IHC, ELISA	Positive Controls:
Species Specificity: mouse, rat, human	WB : mouse testis tissue, rat testis tissue
Note-IHC: suggested antigen retrieval with TE buffer pH 9.0; (*) Alternatively, antigen retrieval may be performed with citrate buffer pH 6.0	IHC : human small intestine tissue,

Background Information

KLHL34 is a member of the Kelch-like (KLHL) gene family, which encodes a group of proteins that generally possess a BTB/POZ domain, a BACK domain and 5-6 Kelch motifs. KLHL genes are responsible for several Mendelian diseases and have been associated with cancer. The molecular mass of KLHL34 is 71 kDa.

Storage

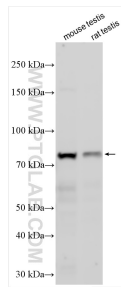
Storage:
Store at -20°C. Stable for one year after shipment.
Storage Buffer:
PBS with 0.02% sodium azide and 50% glycerol pH 7.3.
Aliquoting is unnecessary for -20°C storage

*** 20ul sizes contain 0.1% BSA

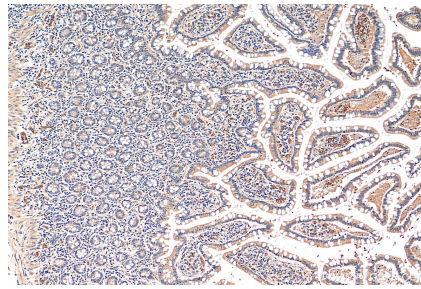
For technical support and original validation data for this product please contact:
T: 1 (888) 4PTGLAB (1-888-478-4522) (toll free in USA), or 1(312) 455-8498 (outside USA)
E: proteintech@ptglab.com
W: ptglab.com

This product is exclusively available under Proteintech Group brand and is not available to purchase from any other manufacturer.

Selected Validation Data



Various lysates were subjected to SDS PAGE followed by western blot with 21981-1-AP (KLHL34 antibody) at dilution of 1:800 incubated at room temperature for 1.5 hours.



Immunohistochemical analysis of paraffin-embedded human small intestine tissue slide using 21981-1-AP (KLHL34 antibody) at dilution of 1:200 (under 10x lens).