

For Research Use Only

# Annexin A1 Polyclonal antibody, PBS Only

Catalog Number: 21990-1-PBS

Featured Product



## Basic Information

**Catalog Number:**

21990-1-PBS

**Size:**

100ug, Concentration: 1 mg/ml by Nanodrop;

**Source:**

Rabbit

**Isotype:**

IgG

**Immunogen Catalog Number:**

AG17273

**GenBank Accession Number:**

BC001275

**GeneID (NCBI):**

301

**UNIPROT ID:**

P04083

**Full Name:**

annexin A1

**Calculated MW:**

346 aa, 39 kDa

**Observed MW:**

37 kDa

**Purification Method:**

Antigen affinity purification

## Applications

**Tested Applications:**

WB, IHC, IF/ICC, FC (Intra), IP, ELISA

**Species Specificity:**

human, mouse, rat

## Background Information

ANXA1, also named as ANX1, LPC1 and p35, belongs to the annexin family. It is a member of the annexin family of Ca<sup>2+</sup>-binding and phospholipid-binding proteins, and it is particularly abundant in various populations of peripheral blood leukocytes. ANXA1 regulates phospholipase A2 activity. It seems to bind from two to four calcium ions with high affinity. ANXA1 is a pleiotropic protein produced by many cell types including peripheral blood leukocytes.

## Storage

**Storage:**

Store at -80°C.

**Storage Buffer:**

PBS only, pH7.3

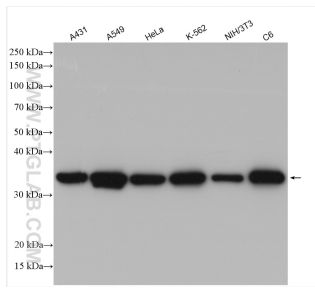
For technical support and original validation data for this product please contact:

T: 1 (888) 4PTGLAB (1-888-478-4522) (toll free in USA), or 1(312) 455-8498 (outside USA)

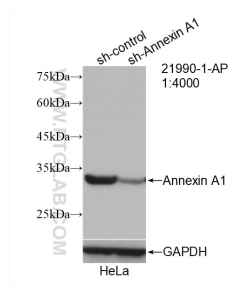
E: [proteintech@ptglab.com](mailto:proteintech@ptglab.com)  
W: [ptglab.com](http://ptglab.com)

This product is exclusively available under Proteintech Group brand and is not available to purchase from any other manufacturer.

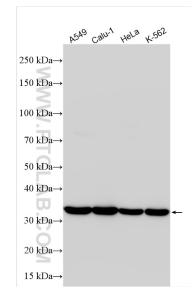
## Selected Validation Data



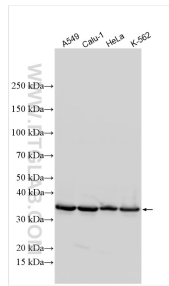
Various lysates were subjected to SDS PAGE followed by western blot with 21990-1-AP (Annexin A1 antibody) at dilution of 1:25000 incubated at room temperature for 1.5 hours. This data was developed using the same antibody clone with 21990-1-PBS in a different storage buffer formulation.



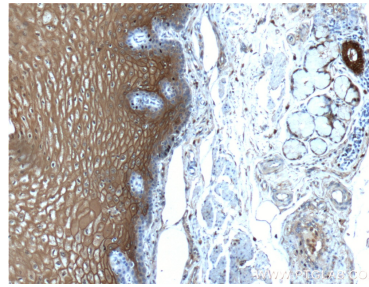
WB result of Annexin A1 antibody (21990-1-AP; 1:4000; incubated at room temperature for 1.5 hours) with sh-Control and sh-Annexin A1 transfected HeLa cells. This data was developed using the same antibody clone with 21990-1-PBS in a different storage buffer formulation.



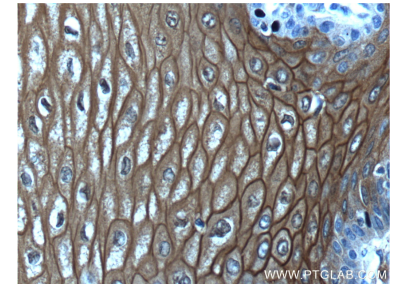
A549 cells were subjected to SDS PAGE followed by western blot with 21990-1-AP (Annexin A1 antibody) at dilution of 1:40000 incubated at room temperature for 1.5 hours. This data was developed using the same antibody clone with 21990-1-PBS in a different storage buffer formulation.



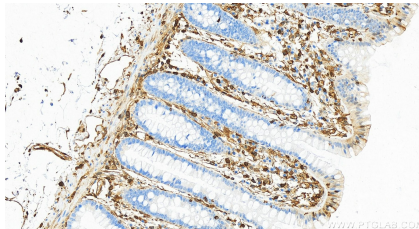
Various lysates were subjected to SDS PAGE followed by western blot with 21990-1-AP (Annexin A1 antibody) at dilution of 1:60000 incubated at room temperature for 1.5 hours. This data was developed using the same antibody clone with 21990-1-PBS in a different storage buffer formulation.



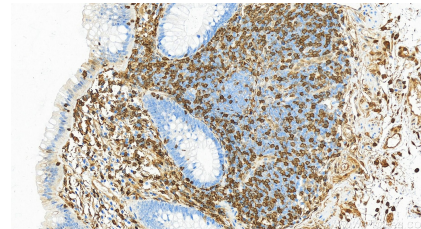
Immunohistochemical analysis of paraffin-embedded human oesophagus tissue slide using 21990-1-AP (Annexin A1 antibody) at dilution of 1:200 (under 10x lens). This data was developed using the same antibody clone with 21990-1-PBS in a different storage buffer formulation.



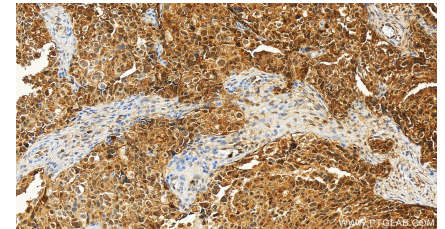
Immunohistochemical analysis of paraffin-embedded human oesophagus tissue slide using 21990-1-AP (Annexin A1 antibody) at dilution of 1:200 (under 40x lens). This data was developed using the same antibody clone with 21990-1-PBS in a different storage buffer formulation.



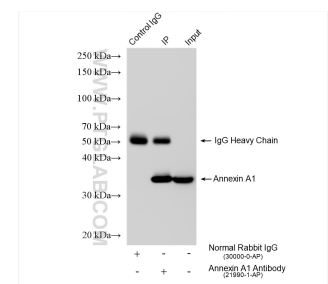
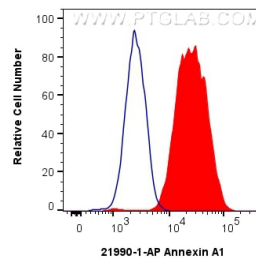
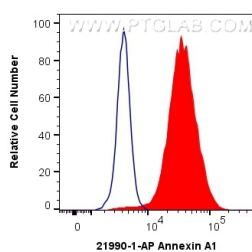
Immunohistochemical analysis of paraffin-embedded human normal colon slide using 21990-1-AP (Annexin A1 antibody) at dilution of 1:5000 (under 20x lens). Heat mediated antigen retrieval with Tris-EDTA buffer (pH 9.0). This data was developed using the same antibody clone with 21990-1-PBS in a different storage buffer formulation.



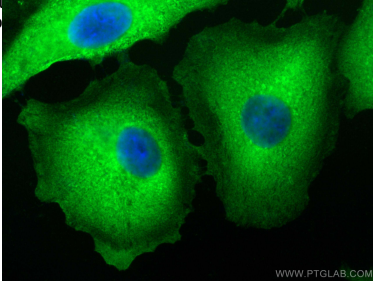
Immunohistochemical analysis of paraffin-embedded human normal colon slide using 21990-1-AP (Annexin A1 antibody) at dilution of 1:5000 (under 20x lens). Heat mediated antigen retrieval with Tris-EDTA buffer (pH 9.0). This data was developed using the same antibody clone with 21990-1-PBS in a different storage buffer formulation.



Immunohistochemical analysis of paraffin-embedded human ovary cancer tissue slide using 21990-1-AP (Annexin A1 antibody) at dilution of 1:5000 (under 20x lens). Heat mediated antigen retrieval with Tris-EDTA buffer (pH 9.0). This data was developed using the same antibody clone with 21990-1-PBS in a different storage buffer formulation.

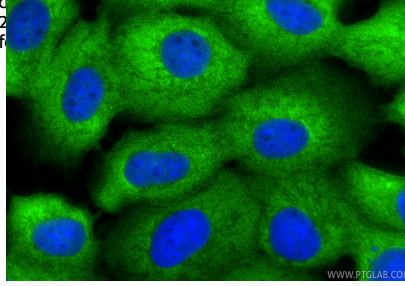


1x10<sup>6</sup> NIH/3T3 cells were intracellularly stained with 0.5 ug Anti-Human Annexin A1 (21990-1-AP) and CoraLite®488-Conjugated AffiniPure Goat Anti-Rabbit IgG(H+L) at dilution 1:1000 (red), or 0.5 ug Control Antibody. Cells were fixed with 4% PFA and permeabilized with Flow Cytometry Perm Buffer. This data was developed using the same antibody clone with 21990-1-PBS in a different storage



fixed A549 cells using Annexin A1 antibody (21990-1-AP) at dilution of 1:400 and CoraLite®488-Conjugated AffiniPure Goat Anti-Rabbit IgG(H+L) (SA00013-2). This data was developed using the same antibody clone with 21990-1-PBS in a different storage buffer formulation.

1x10<sup>6</sup> Jurkat cells were intracellularly stained with 0.25 ug Annexin A1 Polyclonal antibody (21990-1-AP) and CoraLite®488-Conjugated Goat Anti-Rabbit IgG(H+L) (SA00013-2)(red), or 0.25 ug rabbit IgG isotype control (blue). Cells were fixed and permeabilized with Transcription Factor Staining Buffer Kit (PF00011). This data was developed using the same antibody clone with 21990-1-PBS in a different storage buffer formulation.



fixed A431 cells using Annexin A1 antibody (21990-1-AP) at dilution of 1:1000 and CoraLite®488-Conjugated Goat Anti-Rabbit IgG(H+L) (SA00013-2). This data was developed using the same antibody clone with 21990-1-PBS in a different storage buffer formulation.

IP result of anti-Annexin A1 (IP:21990-1-AP, 4ug; Detection:21990-1-AP 1:20000) with HeLa cells lysate 1120 ug. This data was developed using the same antibody clone with 21990-1-PBS in a different storage buffer formulation.