

For Research Use Only

# CD107a / LAMP1 Polyclonal antibody



Catalog Number: 21997-1-AP

97 Publications

## Basic Information

Catalog Number:

21997-1-AP

Size:

150ul, Concentration: 650 µg/ml by Nanodrop;

Source:

Rabbit

Isotype:

IgG

Immunogen Catalog Number:

AG17367

GenBank Accession Number:

BC021288

GeneID (NCBI):

3916

ENSEMBL Gene ID:

ENSG00000185896

UNIPROT ID:

P11279

Full Name:

lysosomal-associated membrane protein 1

Calculated MW:

417 aa, 45 kDa

Observed MW:

90-120 kDa

Purification Method:

Antigen affinity purification

Recommended Dilutions:

WB 1:1000-1:8000

IHC 1:50-1:500

## Applications

Tested Applications:

IHC, WB, ELISA

Cited Applications:

FC, IHC, IP, WB

Species Specificity:

human

Cited Species:

turtle, human, monkey, zebrafish, bovine

**Note-IHC: suggested antigen retrieval with TE buffer pH 9.0; (\*) Alternatively, antigen retrieval may be performed with citrate buffer pH 6.0**

Positive Controls:

WB : HepG2 cells, U937 cells

IHC : human liver cancer tissue, human placenta tissue, human gliomas tissue, human pancreas tissue

## Background Information

LAMP1 (also known as CD107a) is a 90-120 kDa heavily glycosylated membrane protein enriched in the lysosomal membrane. LAMP1 functions to provide selectins with carbohydrate ligands. This protein has also been shown to be a marker of degranulation on lymphocytes such as CD8+ and NK cells and may also play a role in tumor cell differentiation and metastasis.

## Notable Publications

Author	Pubmed ID	Journal	Application
Wei Cai	36170234	Autophagy	
Yong Fan	34560177	Food Chem Toxicol	WB
Jie Liu	36096243	Life Sci	WB

## Storage

Storage:

Store at -20°C. Stable for one year after shipment.

Storage Buffer:

PBS with 0.02% sodium azide and 50% glycerol pH 7.3.

Aliquoting is unnecessary for -20°C storage

\*\*\* 20ul sizes contain 0.1% BSA

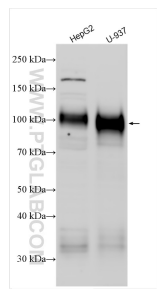
For technical support and original validation data for this product please contact:

T: 1 (888) 4PTGLAB (1-888-478-4522) (toll free in USA), or 1(312) 455-8498 (outside USA)

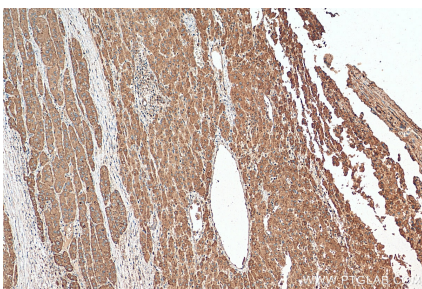
E: [proteintech@ptglab.com](mailto:proteintech@ptglab.com)  
W: [ptglab.com](http://ptglab.com)

This product is exclusively available under Proteintech Group brand and is not available to purchase from any other manufacturer.

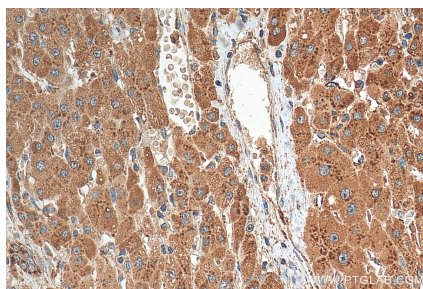
## Selected Validation Data



Various lysates were subjected to SDS PAGE followed by western blot with 21997-1-AP (CD107a / LAMP1 antibody) at dilution of 1:4000 incubated at room temperature for 1.5 hours.



Immunohistochemical analysis of paraffin-embedded human liver cancer tissue slide using 21997-1-AP (LAMP1 antibody) at dilution of 1:200 (under 10x lens). Heat mediated antigen retrieval with Tris-EDTA buffer (pH 9.0).



Immunohistochemical analysis of paraffin-embedded human liver cancer tissue slide using 21997-1-AP (LAMP1 antibody) at dilution of 1:200 (under 40x lens). Heat mediated antigen retrieval with Tris-EDTA buffer (pH 9.0).