

For Research Use Only

SAMD14 Polyclonal antibody

Catalog Number: 22009-1-AP



Basic Information

Catalog Number: 22009-1-AP	GenBank Accession Number: BC141822	Purification Method: Antigen affinity purification
Size: 150ul , Concentration: 700 ug/ml by Nanodrop and 593 ug/ml by Bradford method using BSA as the standard;	GeneID (NCBI): 201191	Recommended Dilutions: WB 1:1000-1:4000
Source: Rabbit	UNIPROT ID: Q8IZDO	IHC 1:50-1:500
Isotype: IgG	Full Name: sterile alpha motif domain containing 14	IF/ICC 1:50-1:500
Immunogen Catalog Number: AG15653	Calculated MW: 445 aa, 48 kDa	
	Observed MW: 50-55 kDa	

Applications

Tested Applications: WB, IHC, IF/ICC, FC (Intra), ELISA	Positive Controls:
Species Specificity: human	WB : COLO 320 cells, HEK-293 cells
Note-IHC: suggested antigen retrieval with TE buffer pH 9.0; (*) Alternatively, antigen retrieval may be performed with citrate buffer pH 6.0	IHC : human kidney tissue,
	IF/ICC : HepG2 cells,

Storage

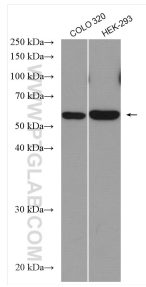
Storage:
Store at -20°C. Stable for one year after shipment.
Storage Buffer:
PBS with 0.02% sodium azide and 50% glycerol pH 7.3.
Aliquoting is unnecessary for -20°C storage

*** 20ul sizes contain 0.1% BSA

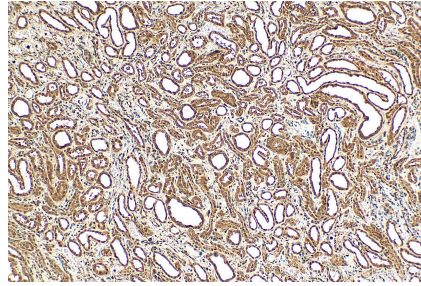
For technical support and original validation data for this product please contact:
T: 1 (888) 4PTGLAB (1-888-478-4522) (toll free in USA), or 1(312) 455-8498 (outside USA)
E: proteintech@ptglab.com
W: ptglab.com

This product is exclusively available under Proteintech Group brand and is not available to purchase from any other manufacturer.

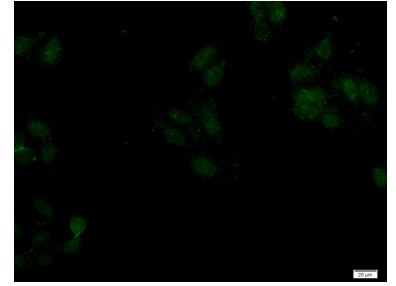
Selected Validation Data



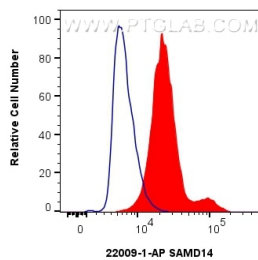
Various lysates were subjected to SDS PAGE followed by western blot with 22009-1-AP (SAMD14 antibody) at dilution of 1:2000 incubated at room temperature for 1.5 hours.



Immunohistochemical analysis of paraffin-embedded human kidney tissue slide using 22009-1-AP (SAMD14 antibody) at dilution of 1:200 (under 10x lens). Heat mediated antigen retrieval with Tris-EDTA buffer (pH 9.0).



Immunofluorescent analysis of HepG2 cells using 22009-1-AP (SAMD14 antibody) at dilution of 1:50 and Alexa Fluor 488-conjugated Goat Anti-Rabbit IgG(H+L).



1x10⁶ HepG2 cells were intracellularly stained with 0.4 ug SAMD14 Polyclonal antibody (22009-1-AP) and CoraLite®488-Conjugated Goat Anti-Rabbit IgG(H+L) (SA00013-2)(red), or 0.4 ug Rabbit IgG control Rabbit PolyAb (30000-0-AP) (blue). Cells were fixed with 4% PFA and permeabilized with Flow Cytometry Perm Buffer (PF00011-C).