

For Research Use Only

PHF20 Polyclonal antibody

Catalog Number: 22010-1-AP **1 Publications**



Basic Information

Catalog Number: 22010-1-AP	GenBank Accession Number: BC150178	Purification Method: Antigen affinity purification
Size: 150ul , Concentration: 800 µg/ml by Nanodrop and 273 µg/ml by Bradford method using BSA as the standard;	GeneID (NCBI): 51230	Recommended Dilutions: WB 1:500-1:2000 IF 1:50-1:500
Source: Rabbit	Full Name: PHD finger protein 20	
Isotype: IgG	Calculated MW: 1012 aa, 115 kDa	
Immunogen Catalog Number: AG15686	Observed MW: 130 kDa	

Applications

Tested Applications: IF, WB, ELISA	Positive Controls: WB : HeLa cells, Jurkat cells, mouse testis tissue
Cited Applications: WB	IF : HeLa cells,
Species Specificity: human, mouse	
Cited Species: human	

Background Information

PHD finger protein 20 (PHF20), also known as NZF, TZP, GLEA2 or HCA58, is a 1,012 amino acid protein that localizes to the nucleus and contains one PHD-type zinc finger, one C2H2-type zinc finger and one A/T hook DNA-binding domain. PHF20 contains a tudor domain, which facilitates binding to di-methylated histone H4 Lys20. PHF20 is expressed in a variety of tissues, including liver, heart, lung, pancreas, spleen, testis and placenta. PHF20 is thought to function as a transcription factor, possibly playing a role in the development of cancers, including glioblastoma, lung cancer, colon cancer and ovarian cancer. PHF20 exists as three alternatively spliced isoforms (150kd, 130kd and 120kd) which are encoded by a gene that maps to human chromosome 20 (22072714).

Notable Publications

Author	Pubmed ID	Journal	Application
Quan Jin	35039981	Biochem Genet	WB

Storage

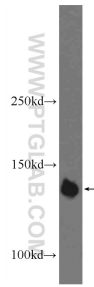
Storage:
Store at -20°C. Stable for one year after shipment.
Storage Buffer:
PBS with 0.02% sodium azide and 50% glycerol pH 7.3.
Aliquoting is unnecessary for -20°C storage

*** 20ul sizes contain 0.1% BSA

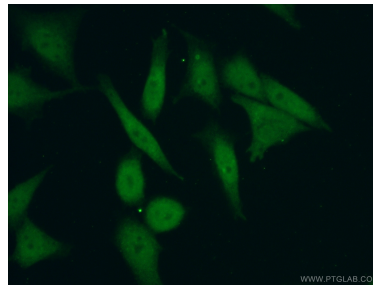
For technical support and original validation data for this product please contact:
T: 1 (888) 4PTGLAB (1-888-478-4522) (toll free in USA), or 1(312) 455-8498 (outside USA)
E: proteintech@ptglab.com
W: ptglab.com

This product is exclusively available under Proteintech Group brand and is not available to purchase from any other manufacturer.

Selected Validation Data



HeLa cells were subjected to SDS PAGE followed by western blot with 22010-1-AP (PHF20 Antibody) at dilution of 1:1000 incubated at room temperature for 1.5 hours.



Immunofluorescent analysis of (10% Formaldehyde) fixed HeLa cells using 22010-1-AP (PHF20 antibody) at dilution of 1:50 and Alexa Fluor 488-conjugated AffiniPure Goat Anti-Rabbit IgG(H+L).