

For Research Use Only

SLC26A5 Polyclonal antibody

Catalog Number: 22013-1-AP



Basic Information

Catalog Number:

22013-1-AP

Size:

150ul, Concentration: 400 ug/ml by Nanodrop;

Source:

Rabbit

Isotype:

IgG

Immunogen Catalog Number:

AG16631

GenBank Accession Number:

BC100832

GeneID (NCBI):

375611

UNIPROT ID:

P58743

Full Name:

solute carrier family 26, member 5 (prestin)

Calculated MW:

744 aa, 81 kDa

Observed MW:

70 kDa

Purification Method:

Antigen affinity purification

Recommended Dilutions:

WB 1:500-1:2000

Applications

Tested Applications:

WB, ELISA

Species Specificity:

human, mouse, rat

Positive Controls:

WB : mouse brain tissue, mouse heart tissue, rat brain tissue, rat heart tissue

Background Information

SLC26A5 (Prestin) is a protein that is housed in abundance within the lateral membrane of outer hair cells (OHC) in the organ of Corti. The protein imparts robust electromechanical activity to the cell that is unlike any other form of cellular motility, notably associated with a voltage-dependent, bell-shaped nonlinear capacitance (NLC) that reports on conformational changes in the protein (PMID: 32061780). SLC26A5 is responsible for acute sensitivity and frequency selectivity in the vertebrate auditory system (PMID: 34294052).

Storage

Storage:

Store at -20°C. Stable for one year after shipment.

Storage Buffer:

PBS with 0.02% sodium azide and 50% glycerol pH 7.3.

Aliquoting is unnecessary for -20°C storage

*** 20ul sizes contain 0.1% BSA

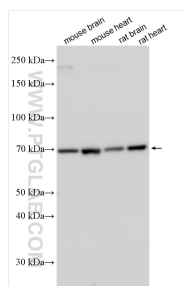
For technical support and original validation data for this product please contact:

T: 1 (888) 4PTGLAB (1-888-478-4522) (toll free in USA), or 1(312) 455-8498 (outside USA)

E: proteintech@ptglab.com
W: ptglab.com

This product is exclusively available under Proteintech Group brand and is not available to purchase from any other manufacturer.

Selected Validation Data



Various lysates were subjected to SDS PAGE followed by western blot with 22013-1-AP (SLC26A5 antibody) at dilution of 1:1000 incubated at room temperature for 1.5 hours.