

For Research Use Only

VAT1 Polyclonal antibody

Catalog Number: 22016-1-AP

Featured Product

2 Publications



Basic Information

Catalog Number:

22016-1-AP

Size:

150ul, Concentration: 400 ug/ml by Nanodrop and 220 ug/ml by Bradford method using BSA as the standard;

Source:

Rabbit

Isotype:

IgG

Immunogen Catalog Number:

AG16652

GenBank Accession Number:

BC015041

GeneID (NCBI):

10493

UNIPROT ID:

Q99536

Full Name:

vesicle amine transport protein 1 homolog (T. californica)

Calculated MW:

42 kDa

Observed MW:

42-50 kDa

Purification Method:

Antigen affinity purification

Recommended Dilutions:

WB 1:2000-1:10000

IHC 1:20-1:200

Applications

Tested Applications:

WB, IHC, ELISA

Cited Applications:

WB, IHC

Species Specificity:

human, rat, mouse

Cited Species:

human

Note-IHC: suggested antigen retrieval with TE buffer pH 9.0; (*) Alternatively, antigen retrieval may be performed with citrate buffer pH 6.0

Positive Controls:

WB : C6 cells, Jurkat cells, MCF-7 cells, SH-SY5Y cells, mouse brain tissue, rat brain tissue

IHC : human gliomas tissue, human brain tissue

Notable Publications

Author	Pubmed ID	Journal	Application
Pei Yang	33576871	Cancer Immunol Immunother	IHC, WB
Xia Shan	31524269	Oncol Rep	WB

Storage

Storage:

Store at -20°C. Stable for one year after shipment.

Storage Buffer:

PBS with 0.02% sodium azide and 50% glycerol pH 7.3.

Aliquoting is unnecessary for -20°C storage

*** 20ul sizes contain 0.1% BSA

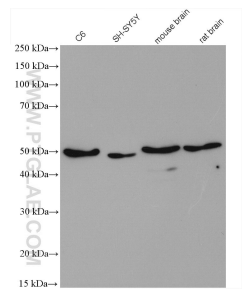
For technical support and original validation data for this product please contact:

T: 1 (888) 4PTGLAB (1-888-478-4522) (toll free in USA), or 1(312) 455-8498 (outside USA)

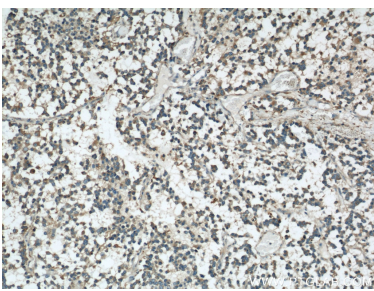
E: proteintech@ptglab.com
W: ptglab.com

This product is exclusively available under Proteintech Group brand and is not available to purchase from any other manufacturer.

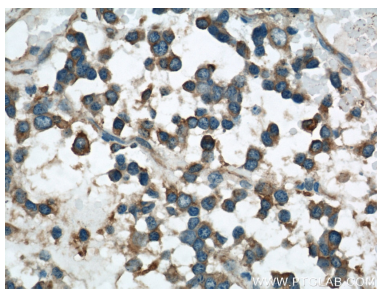
Selected Validation Data



Various lysates were subjected to SDS PAGE followed by western blot with 22016-1-AP (VAT1 antibody) at dilution of 1:5000 incubated at room temperature for 1.5 hours.



Immunohistochemical analysis of paraffin-embedded human gliomas using 22016-1-AP (VAT1 antibody) at dilution of 1:50 (under 10x lens).



Immunohistochemical analysis of paraffin-embedded human gliomas using 22016-1-AP (VAT1 antibody) at dilution of 1:50 (under 40x lens).