

For Research Use Only

RFP2 Polyclonal antibody

Catalog Number: 22021-1-AP

1 Publications



Basic Information

Catalog Number:

22021-1-AP

Size:

150ul, Concentration: 420 µg/ml by Bradford method using BSA as the standard;

Source:

Rabbit

Isotype:

IgG

Immunogen Catalog Number:

AG16805

GenBank Accession Number:

BC003579

GeneID (NCBI):

10206

UNIPROT ID:

O60858

Full Name:

tripartite motif-containing 13

Calculated MW:

407 aa, 47 kDa

Observed MW:

47 kDa

Purification Method:

Antigen affinity purification

Recommended Dilutions:

WB 1:500-1:1000

IP 0.5-4.0 µg for 1.0-3.0 mg of total protein lysate

IHC 1:20-1:200

Applications

Tested Applications:

WB, IP, IHC, ELISA

Cited Applications:

IF

Species Specificity:

human, mouse

Cited Species:

human

Note-IHC: suggested antigen retrieval with TE buffer pH 9.0; (*) Alternatively, antigen retrieval may be performed with citrate buffer pH 6.0

Positive Controls:

WB : Jurkat cells,

IP : Jurkat cells,

IHC : human breast cancer tissue, mouse brain tissue

Notable Publications

Author	Pubmed ID	Journal	Application
Robert S Kiss	37774976	J Biol Chem	IF

Storage

Storage:

Store at -20°C. Stable for one year after shipment.

Storage Buffer:

PBS with 0.02% sodium azide and 50% glycerol pH 7.3.

Aliquoting is unnecessary for -20°C storage

*** 20ul sizes contain 0.1% BSA

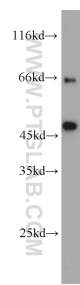
For technical support and original validation data for this product please contact:

T: 1 (888) 4PTGLAB (1-888-478-4522) (toll free in USA), or 1(312) 455-8498 (outside USA)

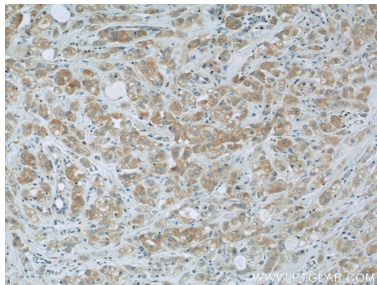
E: proteintech@ptglab.com
W: ptglab.com

This product is exclusively available under Proteintech Group brand and is not available to purchase from any other manufacturer.

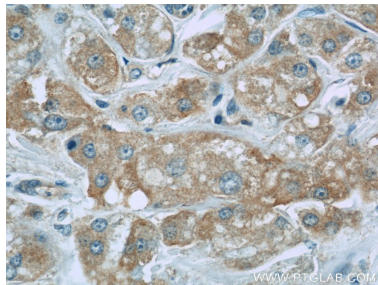
Selected Validation Data



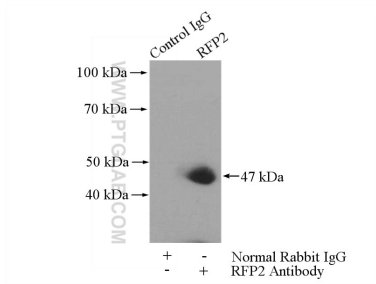
Jurkat cells were subjected to SDS PAGE followed by western blot with 22021-1-AP (RFP2 antibody) at dilution of 1:1000 incubated at room temperature for 1.5 hours.



Immunohistochemical analysis of paraffin-embedded human breast cancer slide using 22021-1-AP (RFP2 antibody at dilution of 1:50.



Immunohistochemical analysis of paraffin-embedded human breast cancer slide using 22021-1-AP (RFP2 antibody at dilution of 1:50.



IP result of anti-RFP2 (IP:22021-1-AP, 4ug; Detection:22021-1-AP 1:1000) with Jurkat cells lysate 3200ug.