

For Research Use Only

NPHP3 Polyclonal antibody

Catalog Number: 22026-1-AP

8 Publications



Basic Information

Catalog Number:

22026-1-AP

Size:

150ul, Concentration: 1000 ug/ml by Nanodrop and 507 ug/ml by Bradford method using BSA as the standard;

Source:

Rabbit

Isotype:

IgG

Immunogen Catalog Number:

AG16888

GenBank Accession Number:

BC068082

GeneID (NCBI):

27031

UNIPROT ID:

Q7Z494

Full Name:

nephronophthisis 3 (adolescent)

Calculated MW:

1330 aa, 151 kDa

Observed MW:

145-151 kDa

Purification Method:

Antigen affinity purification

Recommended Dilutions:

WB 1:500-1:2000

IP 0.5-4.0 ug for 1.0-3.0 mg of total protein lysate

IHC 1:20-1:200

IF/ICC 1:20-1:200

Applications

Tested Applications:

WB, IHC, IF/ICC, IP, ELISA

Cited Applications:

WB, IHC, IF

Species Specificity:

human, mouse, rat, canine

Cited Species:

human, mouse

Note-IHC: suggested antigen retrieval with TE buffer pH 9.0; (*) Alternatively, antigen retrieval may be performed with citrate buffer pH 6.0

Positive Controls:

WB : mouse testis tissue, HepG2 cells, HEK-293 cells, mouse liver tissue, human testis tissue

IP : mouse testis tissue,

IHC : human heart tissue,

IF/ICC : hTERT-RPE1 cells, MDCK cells

Notable Publications

Author	Pubmed ID	Journal	Application
Sumaya Alkanderi	30269812	Am J Hum Genet	IF
Nele Schwarz	25292197	Hum Mol Genet	IF
Shweta Suiwal	35806143	Int J Mol Sci	IF

Storage

Storage:

Store at -20°C. Stable for one year after shipment.

Storage Buffer:

PBS with 0.02% sodium azide and 50% glycerol pH 7.3.

Aliquoting is unnecessary for -20°C storage

*** 20ul sizes contain 0.1% BSA

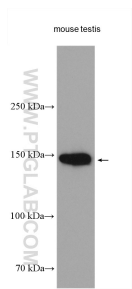
For technical support and original validation data for this product please contact:

T: 1 (888) 4PTGLAB (1-888-478-4522) (toll free in USA), or 1(312) 455-8498 (outside USA)

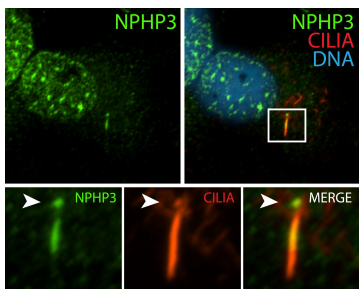
E: proteintech@ptglab.com
W: ptglab.com

This product is exclusively available under Proteintech Group brand and is not available to purchase from any other manufacturer.

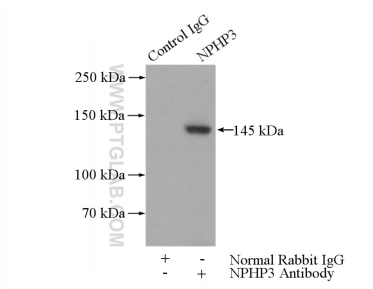
Selected Validation Data



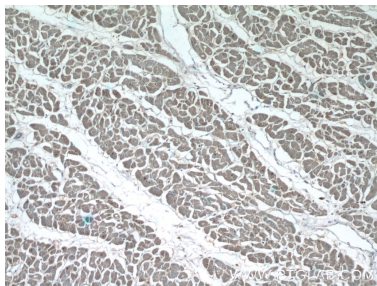
mouse testis lysates were subjected to SDS PAGE followed by western blot with 22026-1-AP (NPHP3 antibody) at dilution of 1:1000 incubated at room temperature for 1.5 hours.



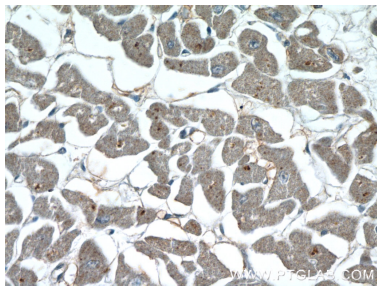
IF result (the base and the lower half of cilia stain) of anti-NPHP3 (22026-1-AP, 1:50) with serum-starved hTERT-RPE1 (MeOH fixed) by Dr. Moshe Kim.



IP result of anti-NPHP3 (IP:22026-1-AP, 4ug; Detection:22026-1-AP 1:1000) with mouse testis tissue lysate 4000ug.



Immunohistochemical analysis of paraffin-embedded human heart tissue slide using 22026-1-AP (NPHP3 Antibody) at dilution of 1:50 (under 10x lens).



Immunohistochemical analysis of paraffin-embedded human heart tissue slide using 22026-1-AP (NPHP3 Antibody) at dilution of 1:50 (under 40x lens).