

For Research Use Only

iPLA2 Polyclonal antibody

Catalog Number: 22030-1-AP **6 Publications**



Basic Information

Catalog Number: 22030-1-AP	GenBank Accession Number: BC036742	Purification Method: Antigen affinity purification
Size: 150ul, Concentration: 650 µg/ml by Nanodrop and 353 µg/ml by Bradford method using BSA as the standard;	GeneID (NCBI): 8398	Recommended Dilutions: WB 1:500-1:2000
Source: Rabbit	Full Name: phospholipase A2, group VI (cytosolic, calcium-independent)	for WB IP 0.5-4.0 ug for IP and 1:500-1:1000
Isotype: IgG	Calculated MW: 90 kDa	IHC 1:20-1:200
Immunogen Catalog Number: AG16896	Observed MW: 80 kDa, 88 kDa	

Applications

Tested Applications: IHC, IP, WB, ELISA	Positive Controls:
Cited Applications: IF, IHC, WB	WB: mouse testis tissue,
Species Specificity: human, mouse	IP: mouse testis tissue,
Cited Species: human, rat, mouse	IHC: human small intestine tissue, human brain tissue
Note-IHC: suggested antigen retrieval with TE buffer pH 9.0; (*) Alternatively, antigen retrieval may be performed with citrate buffer pH 6.0	

Background Information

PLA2G6, also named as PLPLA9, is involved in the remodeling of membranes allowing arachidonic acid to be placed in the proper position in phospholipids for stimulated release. It has been implicated in normal phospholipid remodeling, nitric oxide-induced or vasopressin-induced arachidonic acid release and in leukotriene and prostaglandin production. This protein has 4 isoforms produced by alternative splicing.

Notable Publications

Author	Pubmed ID	Journal	Application
Yao Lu	31506141	Zhongguo Dang Dai Er Ke Za Zhi	IHC
Shuhua Shan	32657580	J Agric Food Chem	WB,IHC
Laura Mahoney-Sanchez	36001957	Cell Rep	WB

Storage

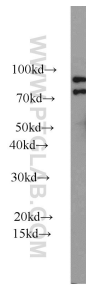
Storage:
Store at -20°C. Stable for one year after shipment.
Storage Buffer:
PBS with 0.02% sodium azide and 50% glycerol pH 7.3.
Aliquoting is unnecessary for -20°C storage

*** 20ul sizes contain 0.1% BSA

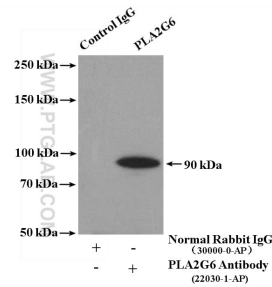
For technical support and original validation data for this product please contact:
T: 1 (888) 4PTGLAB (1-888-478-4522) (toll free in USA), or 1(312) 455-8498 (outside USA)
E: proteintech@ptglab.com
W: ptglab.com

This product is exclusively available under Proteintech Group brand and is not available to purchase from any other manufacturer.

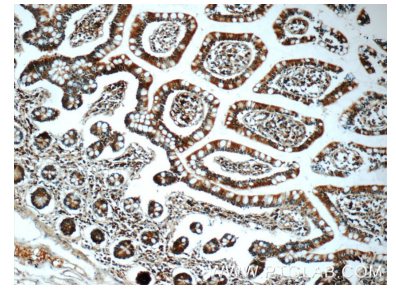
Selected Validation Data



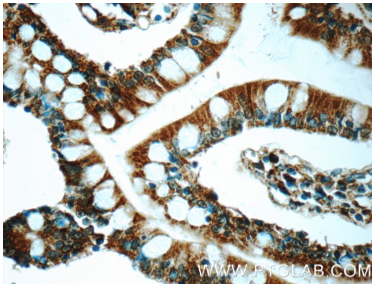
mouse testis tissue were subjected to SDS PAGE followed by western blot with 22030-1-AP (iPLA2 antibody) at dilution of 1:1000 incubated at room temperature for 1.5 hours.



IP Result of anti-iPLA2 (IP:22030-1-AP, 4ug; Detection:22030-1-AP 1:800) with mouse testis tissue lysate 4000ug.



Immunohistochemical analysis of paraffin-embedded human small intestine tissue slide using 22030-1-AP (iPLA2 antibody at dilution of 1:50 (under 10x lens).



Immunohistochemical analysis of paraffin-embedded human small intestine tissue slide using 22030-1-AP (iPLA2 antibody at dilution of 1:50 (under 40x lens).