

For Research Use Only

# SARA Polyclonal antibody

Catalog Number: 22033-1-AP

Featured Product

3 Publications



## Basic Information

<b>Catalog Number:</b> 22033-1-AP	<b>GenBank Accession Number:</b> BC032680	<b>Purification Method:</b> Antigen affinity purification
<b>Size:</b> 150ul , Concentration: 450 µg/ml by Nanodrop;	<b>GeneID (NCBI):</b> 9372	<b>Recommended Dilutions:</b> WB 1:500-1:2000 IP 0.5-4.0 ug for IP and 1:500-1:2000
<b>Source:</b> Rabbit	<b>Full Name:</b> zinc finger, FYVE domain containing 9	<b>for WB</b> IHC 1:20-1:200 IF 1:50-1:500
<b>Isotype:</b> IgG	<b>Calculated MW:</b> 1425 aa, 156 kDa	
<b>Immunogen Catalog Number:</b> AG16929	<b>Observed MW:</b> 156 kDa	

## Applications

### Tested Applications:

IF, IHC, IP, WB, ELISA

### Cited Applications:

IF, WB

### Species Specificity:

human, mouse, rat

### Cited Species:

human, mouse

**Note-IHC: suggested antigen retrieval with TE buffer pH 9.0; (\*) Alternatively, antigen retrieval may be performed with citrate buffer pH 6.0**

### Positive Controls:

**WB:** HEK-293 cells, mouse brain tissue, MCF-7 cells, human brain tissue, HeLa cells

**IP:** mouse brain tissue,

**IHC:** human kidney tissue,

**IF:** mouse brain tissue, mouse kidney tissue

## Background Information

ZFYVE9, also known as SARA (Smad anchor for receptor activation), is a double zinc finger (FYVE domain) protein that interacts directly with SMAD2 and SMAD3, and is involved in Alzheimer's disease. SARA functions to recruit SMAD2/SMAD3 to intracellular membranes and to the TGF-beta receptor. SARA plays a significant role in TGF-mediated signaling by regulating the subcellular location of SMAD2 and SMAD3 and modulating the transcriptional activity of the SMAD3/SMAD4 complex. SARA is possibly associated with TGF-beta receptor internalization.

## Notable Publications

Author	Pubmed ID	Journal	Application
Changgui Shi	36321807	J Bone Miner Res	WB,IF
Deepankar Gahloth	28602823	Structure	WB
Zheng-Zhou Lu	37224259	Sci Adv	WB,IF

## Storage

### Storage:

Store at -20°C. Stable for one year after shipment.

### Storage Buffer:

PBS with 0.02% sodium azide and 50% glycerol pH 7.3.

Aliquoting is unnecessary for -20°C storage

\*\*\* 20ul sizes contain 0.1% BSA

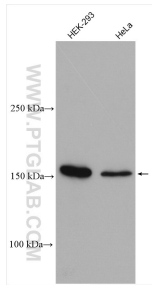
For technical support and original validation data for this product please contact:

T: 1 (888) 4PTGLAB (1-888-478-4522) (toll free in USA), or 1(312) 455-8498 (outside USA)

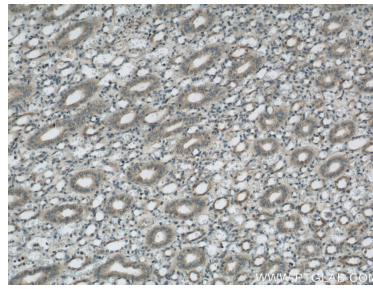
E: [proteintech@ptglab.com](mailto:proteintech@ptglab.com)  
W: [ptglab.com](http://ptglab.com)

This product is exclusively available under Proteintech Group brand and is not available to purchase from any other manufacturer.

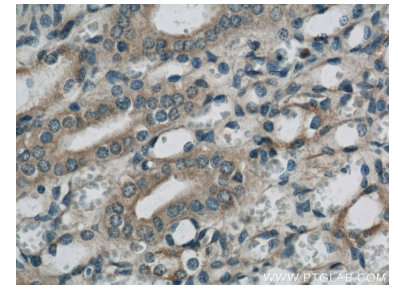
## Selected Validation Data



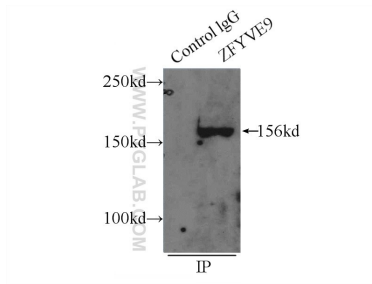
Various lysates were subjected to SDS PAGE followed by western blot with 22033-1-AP (SARA antibody) at dilution of 1:1000 incubated at room temperature for 1.5 hours.



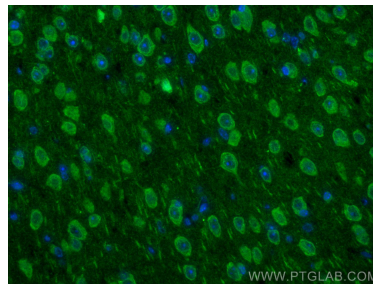
Immunohistochemical analysis of paraffin-embedded human kidney using 22033-1-AP (SARA antibody) at dilution of 1:50 (under 10x lens).



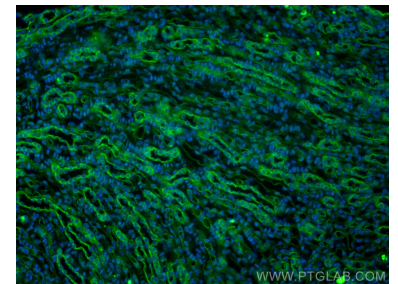
Immunohistochemical analysis of paraffin-embedded human kidney using 22033-1-AP (SARA antibody) at dilution of 1:50 (under 40x lens).



IP Result of anti-SARA (IP:22033-1-AP, 5ug; Detection:22033-1-AP 1:1000) with mouse brain tissue lysate 5000ug.



Immunofluorescent analysis of (4% PFA) fixed mouse brain tissue using SARA antibody (22033-1-AP) at dilution of 1:200 and CoraLite®488-Conjugated AffiniPure Goat Anti-Rabbit IgG(H+L).



Immunofluorescent analysis of (4% PFA) fixed mouse kidney tissue using SARA antibody (22033-1-AP) at dilution of 1:200 and CoraLite®488-Conjugated AffiniPure Goat Anti-Rabbit IgG(H+L).