

For Research Use Only

Bim Polyclonal antibody

Catalog Number: 22037-1-AP

26 Publications



Basic Information

Catalog Number:

22037-1-AP

Size:

150ul, Concentration: 300 ug/ml by Nanodrop and 300 ug/ml by Bradford method using BSA as the standard;

Source:

Rabbit

Isotype:

IgG

Immunogen Catalog Number:

AG11875

GenBank Accession Number:

BC033694

GeneID (NCBI):

10018

UNIPROT ID:

O43521

Full Name:

BCL2-like 11 (apoptosis facilitator)

Calculated MW:

198 aa, 22 kDa

Observed MW:

23 and 18 kDa

Purification Method:

Antigen affinity purification

Recommended Dilutions:

WB 1:500-1:1000

IHC 1:50-1:500

Applications

Tested Applications:

WB, IHC, ELISA

Cited Applications:

WB, IHC

Species Specificity:

human, mouse

Cited Species:

human, mouse

Note-IHC: suggested antigen retrieval with TE buffer pH 9.0; (*) Alternatively, antigen retrieval may be performed with citrate buffer pH 6.0

Positive Controls:

WB : RAW 264.7 cells, Raji cells

IHC : human breast cancer tissue, human prostate cancer tissue

Notable Publications

Author	Pubmed ID	Journal	Application
Yingjie Qing	34603598	Oxid Med Cell Longev	WB
Xiulian Miao	34689159	Cell Death Discov	WB
Yingjie Lu	33200796	Mol Med Rep	IHC, WB

Storage

Storage:

Store at -20°C. Stable for one year after shipment.

Storage Buffer:

PBS with 0.02% sodium azide and 50% glycerol pH 7.3.

Aliquoting is unnecessary for -20°C storage

*** 20ul sizes contain 0.1% BSA

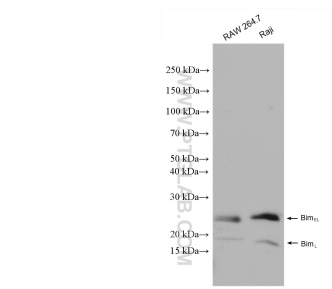
For technical support and original validation data for this product please contact:

T: 1 (888) 4PTGLAB (1-888-478-4522) (toll free in USA), or 1(312) 455-8498 (outside USA)

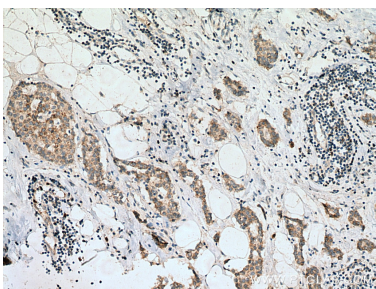
E: proteintech@ptglab.com
W: ptglab.com

This product is exclusively available under Proteintech Group brand and is not available to purchase from any other manufacturer.

Selected Validation Data



Various lysates were subjected to SDS PAGE followed by western blot with 22037-1-AP (BIM, BCL2L11 antibody) at dilution of 1:500 incubated at room temperature for 1.5 hours.



Immunohistochemical analysis of paraffin-embedded human breast cancer tissue slide using 22037-1-AP (BIM, BCL2L11 antibody) at dilution of 1:200 (under 10x lens). Heat mediated antigen retrieval with Tris-EDTA buffer (pH 9.0).