

For Research Use Only

# AHI1 Polyclonal antibody

Catalog Number: 22045-1-AP

Featured Product

5 Publications



## Basic Information

<b>Catalog Number:</b> 22045-1-AP	<b>GenBank Accession Number:</b> BC094800	<b>Purification Method:</b> Antigen affinity purification
<b>Size:</b> 150ul, Concentration: 400 µg/ml by Nanodrop;	<b>GeneID (NCBI):</b> 54806	<b>Recommended Dilutions:</b> WB 1:2000-1:12000
<b>Source:</b> Rabbit	<b>Full Name:</b> Abelson helper integration site 1	
<b>Isotype:</b> IgG	<b>Calculated MW:</b> 1196 aa, 137 kDa	
<b>Immunogen Catalog Number:</b> AG16885	<b>Observed MW:</b> 137-150 kDa	

## Applications

<b>Tested Applications:</b> WB, ELISA	<b>Positive Controls:</b> WB : HEK-293 cells, HeLa cells, Jurkat cell
<b>Cited Applications:</b> IF, WB	
<b>Species Specificity:</b> human	
<b>Cited Species:</b> human, mouse	

## Background Information

AHI1, encoding the Joubertin protein, is an alternatively spliced signaling molecule that contains seven Trp-Asp (WD) repeats, an SH3 domain, and numerous SH3-binding sites. AHI1 is expressed strongly in embryonic hindbrain and forebrain. AHI1 is involved in vesicle trafficking and is required for ciliogenesis, formation of primary non-motile cilium, and recruitment of RAB8A to the basal body of primary cilium. AHI1, as a positive modulator of classical Wnt signaling, may play a key role in ciliary signaling during cerebellar embryonic development (PMID: 15467982, PMID: 21623382).

## Notable Publications

Author	Pubmed ID	Journal	Application
Elisa Molinari	31346239	Sci Rep	IF
Yin Loon Lee	25103236	Mol Biol Cell	IF, WB
Sarah E Conduit	33996795	Front Cell Dev Biol	IF

## Storage

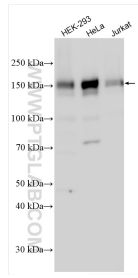
**Storage:**  
Store at -20°C. Stable for one year after shipment.  
**Storage Buffer:**  
PBS with 0.02% sodium azide and 50% glycerol pH 7.3.  
Aliquoting is unnecessary for -20°C storage

\*\*\* 20ul sizes contain 0.1% BSA

For technical support and original validation data for this product please contact:  
T: 1 (888) 4PTGLAB (1-888-478-4522) (toll free in USA), or 1(312) 455-8498 (outside USA)  
E: proteintech@ptglab.com  
W: ptglab.com

This product is exclusively available under Proteintech Group brand and is not available to purchase from any other manufacturer.

## Selected Validation Data



Various lysates were subjected to SDS PAGE followed by western blot with 22045-1-AP (AHI 1 antibody) at dilution of 1:6000 incubated at room temperature for 1.5 hours.