

For Research Use Only

# WIPF1 Polyclonal antibody

Catalog Number: 22047-1-AP



## Basic Information

<b>Catalog Number:</b> 22047-1-AP	<b>GenBank Accession Number:</b> BC110288	<b>Purification Method:</b> Antigen affinity purification
<b>Size:</b> 150ul , Concentration: 900 ug/ml by Nanodrop;	<b>GeneID (NCBI):</b> 7456	<b>Recommended Dilutions:</b> WB 1:500-1:2000 IHC 1:50-1:500
<b>Source:</b> Rabbit	<b>UNIPROT ID:</b> O43516	
<b>Isotype:</b> IgG	<b>Full Name:</b> WAS/WASL interacting protein family, member 1	
<b>Immunogen Catalog Number:</b> AG16975	<b>Calculated MW:</b> 403aa,40 kDa; 503aa,51 kDa	
	<b>Observed MW:</b> 51 kDa	

## Applications

<b>Tested Applications:</b> WB, IHC, ELISA	<b>Positive Controls:</b>
<b>Species Specificity:</b> human	<b>WB :</b> HL-60 cells,
<b>Note-IHC:</b> suggested antigen retrieval with <b>TE buffer pH 9.0; (*) Alternatively, antigen retrieval may be performed with citrate buffer pH 6.0</b>	<b>IHC :</b> human stomach cancer tissue,

## Background Information

WASP interacting protein family member 1(WIPF1), also known as WIP, is a ubiquitously expressed proline-rich multidomain protein and plays a role in the reorganization of the actin cytoskeleton. Mutations in the WIPF1 binding site of the Wiskott-Aldrich syndrome protein or in WIPF1 itself cause Wiskott-Aldrich syndrome, which predisposes people to cancer, such as leukemia and lymphoma(PMID: 27863429).

## Storage

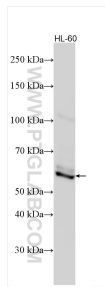
**Storage:**  
Store at -20°C. Stable for one year after shipment.  
**Storage Buffer:**  
PBS with 0.02% sodium azide and 50% glycerol pH 7.3.  
**Aliquoting is unnecessary for -20°C storage**

\*\*\* 20ul sizes contain 0.1% BSA

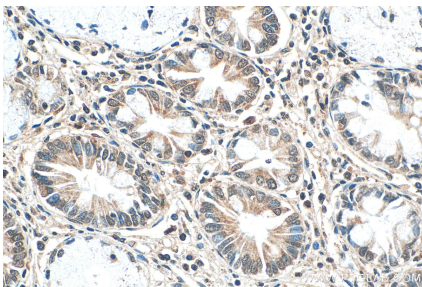
For technical support and original validation data for this product please contact:  
T: 1 (888) 4PTGLAB (1-888-478-4522) (toll free in USA), or 1(312) 455-8498 (outside USA)  
E: proteintech@ptglab.com  
W: ptglab.com

This product is exclusively available under Proteintech Group brand and is not available to purchase from any other manufacturer.

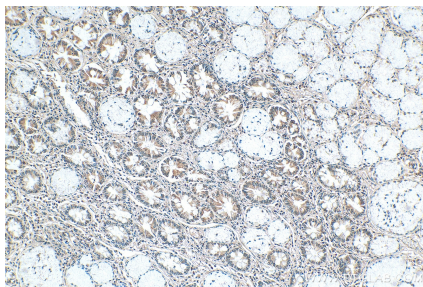
## Selected Validation Data



Various lysates were subjected to SDS PAGE followed by western blot with 22047-1-AP (WIPF1 antibody) at dilution of 1:1000 incubated at room temperature for 1.5 hours.



Immunohistochemical analysis of paraffin-embedded human stomach cancer tissue slide using 22047-1-AP (WIPF1 antibody) at dilution of 1:200 (under 40x lens). Heat mediated antigen retrieval with Tris-EDTA buffer (pH 9.0).



Immunohistochemical analysis of paraffin-embedded human stomach cancer tissue slide using 22047-1-AP (WIPF1 antibody) at dilution of 1:200 (under 10x lens). Heat mediated antigen retrieval with Tris-EDTA buffer (pH 9.0).