

For Research Use Only

CEP97 Polyclonal antibody, PBS Only

Catalog Number:22050-1-PBS



Basic Information

Catalog Number: 22050-1-PBS	GenBank Accession Number: BC041085	Purification Method: Antigen affinity purification
Size: 100ug , Concentration: 1 mg/ml by Nanodrop;	GeneID (NCBI): 79598	
Source: Rabbit	UNIPROT ID: Q8IW35	
Isotype: IgG	Full Name: centrosomal protein 97kDa	
Immunogen Catalog Number: AG16995	Calculated MW: 865 aa, 97 kDa	
	Observed MW: 130-140 kDa	

Applications

Tested Applications:
WB, IHC, IF/ICC, IP, Indirect ELISA

Species Specificity:
human, canine

Background Information

CEP97, also named as LRRIQ2, contains one IQ domain, eight LRR (leucine-rich) repeats and one LRRCT domain. It collaborates with CEP110, being involved in the suppression of a cilia assembly program. CEP97 is required for correct spindle formation and has a role in cytokinesis. It is required for recruitment of CEP110 to the centrosome. This protein has a calculated MW ~97 kDa, although the protein migrates at a molecular weight of approximate 140 kDa. The protein is highly acidic, with a pI ~4.7, providing a potential explanation for its reduced mobility in SDS-PAGE. [PMID: 17719545]. This is a rabbit polyclonal antibody raised against the C terminus of human CEP97.

Storage

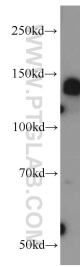
Storage:
Store at -80°C.

Storage Buffer:
PBS only, pH7.3

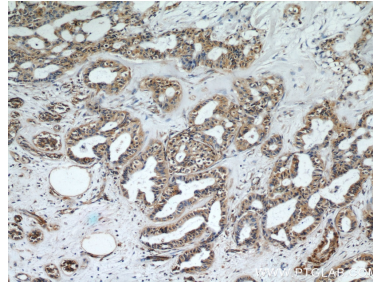
For technical support and original validation data for this product please contact:
T: 1 (888) 4PTGLAB (1-888-478-4522) (toll free in USA), or 1(312) 455-8498 (outside USA) E: proteintech@ptglab.com
W: ptglab.com

This product is exclusively available under Proteintech Group brand and is not available to purchase from any other manufacturer.

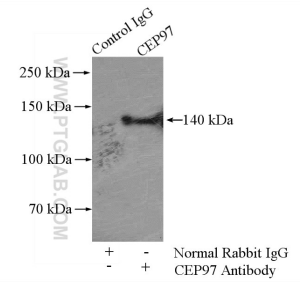
Selected Validation Data



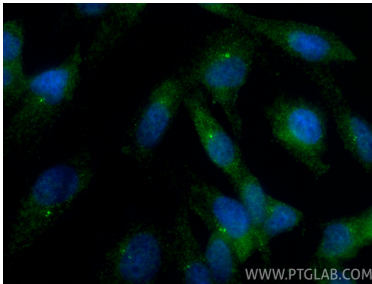
HL-60 cells were subjected to SDS PAGE followed by western blot with 22050-1-AP (CEP97 antibody) at dilution of 1:1000 incubated at room temperature for 1.5 hours. This data was developed using the same antibody clone with 22050-1-PBS in a different storage buffer formulation.



Immunohistochemical analysis of paraffin-embedded human breast cancer using 22050-1-AP (CEP97 antibody) at dilution of 1:50 (under 10x lens). This data was developed using the same antibody clone with 22050-1-PBS in a different storage buffer formulation.



IP result of anti-CEP97 (IP:22050-1-AP, 4ug; Detection:22050-1-AP 1:1000) with HeLa cells lysate 1200ug. This data was developed using the same antibody clone with 22050-1-PBS in a different storage buffer formulation.



Immunofluorescent analysis of (4% PFA) fixed MDCK cells using CEP97 antibody (22050-1-AP) at dilution of 1:1000 and CoraLite®488-Conjugated Goat Anti-Rabbit IgG(H+L) (SA00013-2). This data was developed using the same antibody clone with 22050-1-PBS in a different storage buffer formulation.