

For Research Use Only

# CCR10 Polyclonal antibody

Catalog Number: 22071-1-AP

4 Publications



## Basic Information

<b>Catalog Number:</b> 22071-1-AP	<b>GenBank Accession Number:</b> BC099840	<b>Purification Method:</b> Antigen affinity purification
<b>Size:</b> 150ul, Concentration: 750 µg/ml by Nanodrop and 440 µg/ml by Bradford method using BSA as the standard;	<b>GeneID (NCBI):</b> 2826	<b>Recommended Dilutions:</b> WB 1:500-1:2000 IHC 1:20-1:200
<b>Source:</b> Rabbit	<b>Full Name:</b> chemokine (C-C motif) receptor 10	
<b>Isotype:</b> IgG	<b>Calculated MW:</b> 362 aa, 38 kDa	
<b>Immunogen Catalog Number:</b> AG17212	<b>Observed MW:</b> 38-42 kDa	

## Applications

<b>Tested Applications:</b> FC, IHC, WB, ELISA	<b>Positive Controls:</b>
<b>Cited Applications:</b> FC, IHC, WB	<b>WB :</b> mouse brain tissue, rat brain tissue
<b>Species Specificity:</b> human, mouse, rat	<b>IHC :</b> human spleen tissue,
<b>Cited Species:</b> human, mouse	
<b>Note-IHC: suggested antigen retrieval with TE buffer pH 9.0; (*) Alternatively, antigen retrieval may be performed with citrate buffer pH 6.0</b>	

## Background Information

CCR10 (also known as GPR2) is a G-protein coupled receptor for chemokines CCL27 (SCYA27) and CCL28 (SCYA28). CCR10-CCL27 interactions are involved in T cell-mediated skin inflammation (PMID: 11821900). CCR10-CCL28 interactions are thought to contribute to the accumulation of IgA Ab-secreting cells (ASC) to mucosal surfaces.

## Notable Publications

Author	Pubmed ID	Journal	Application
Zhenzhen Hui	33868236	Front Immunol	WB
YINGTING WU	34913072	Mol Med Rep	IHC
Nana Tao	38191481	Inflamm Regen	IHC

## Storage

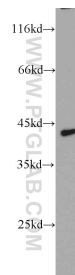
**Storage:**  
Store at -20°C. Stable for one year after shipment.  
**Storage Buffer:**  
PBS with 0.02% sodium azide and 50% glycerol pH 7.3.  
Aliquoting is unnecessary for -20°C storage

\*\*\* 20ul sizes contain 0.1% BSA

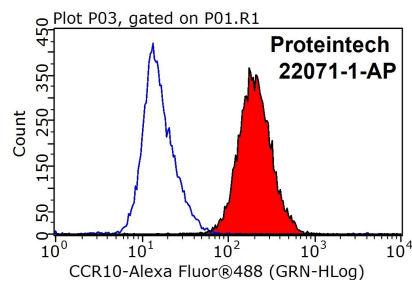
For technical support and original validation data for this product please contact:  
T: 1 (888) 4PTGLAB (1-888-478-4522) (toll free in USA), or 1(312) 455-8498 (outside USA)  
E: proteintech@ptglab.com  
W: ptglab.com

This product is exclusively available under Proteintech Group brand and is not available to purchase from any other manufacturer.

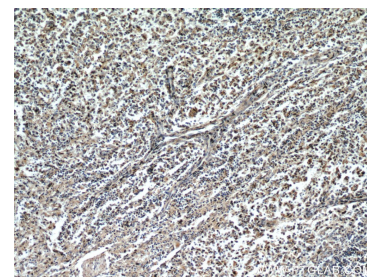
## Selected Validation Data



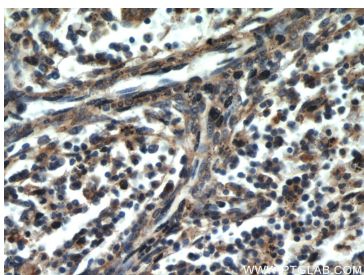
mouse brain tissue were subjected to SDS PAGE followed by western blot with 22071-1-AP (CCR10 antibody) at dilution of 1:1000 incubated at room temperature for 1.5 hours.



1X10<sup>6</sup> HepG2 cells were stained with 0.2ug CCR10 antibody (22071-1-AP, red) and control antibody (blue). Fixed with 90% MeOH blocked with 3% BSA (30 min). Alexa Fluor 488-conjugated AffiniPure Goat Anti-Rabbit IgG(H+L) with dilution 1:1000.



Immunohistochemical analysis of paraffin-embedded human spleen using 22071-1-AP (CCR10 antibody) at dilution of 1:50 (under 10x lens).



Immunohistochemical analysis of paraffin-embedded human spleen using 22071-1-AP (CCR10 antibody) at dilution of 1:50 (under 40x lens).