

For Research Use Only

# PPP1R14D Polyclonal antibody

Catalog Number: 22080-1-AP



## Basic Information

<b>Catalog Number:</b> 22080-1-AP	<b>GenBank Accession Number:</b> BC096716	<b>Purification Method:</b> Antigen affinity purification
<b>Size:</b> 150ul , Concentration: 900 µg/ml by Nanodrop;	<b>GeneID (NCBI):</b> 54866	<b>Recommended Dilutions:</b> WB 1:500-1:2000
<b>Source:</b> Rabbit	<b>Full Name:</b> protein phosphatase 1, regulatory (inhibitor) subunit 14D	
<b>Isotype:</b> IgG	<b>Calculated MW:</b> 145 aa, 17 kDa	
<b>Immunogen Catalog Number:</b> AG17246	<b>Observed MW:</b> 21 kDa	

## Applications

**Tested Applications:**  
WB, ELISA

**Species Specificity:**  
human, mouse

**Positive Controls:**

WB : COLO 320 cells, mouse colon tissue, rat colon tissue

## Background Information

### Storage

**Storage:**  
Store at -20°C. Stable for one year after shipment.

**Storage Buffer:**  
PBS with 0.02% sodium azide and 50% glycerol pH 7.3.

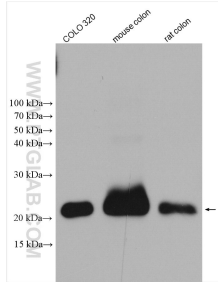
Aliquoting is unnecessary for -20°C storage

\*\*\* 20ul sizes contain 0.1% BSA

For technical support and original validation data for this product please contact:  
T: 1 (888) 4PTGLAB (1-888-478-4522) (toll free in USA), or 1(312) 455-8498 (outside USA)      E: proteintech@ptglab.com  
W: ptglab.com

This product is exclusively available under Proteintech Group brand and is not available to purchase from any other manufacturer.

## Selected Validation Data



Various lysates were subjected to SDS PAGE followed by western blot with 22080-1-AP (PPP1R14D antibody) at dilution of 1:1000 incubated at room temperature for 1.5 hours.