

For Research Use Only

# CDX2 Polyclonal antibody

Catalog Number: 22101-1-AP



## Basic Information

<b>Catalog Number:</b> 22101-1-AP	<b>GenBank Accession Number:</b> BC014461	<b>Purification Method:</b> Antigen affinity purification
<b>Size:</b> 150ul , Concentration: 450 ug/ml by Nanodrop;	<b>GeneID (NCBI):</b> 1045	<b>Recommended Dilutions:</b> WB 1:500-1:2000
<b>Source:</b> Rabbit	<b>UNIPROT ID:</b> Q99626	<b>IHC 1:500-1:2000</b>
<b>Isotype:</b> IgG	<b>Full Name:</b> caudal type homeobox 2	<b>IF/ICC 1:200-1:800</b>
<b>Immunogen Catalog Number:</b> AG17310	<b>Calculated MW:</b> 313 aa, 34 kDa	
	<b>Observed MW:</b> 33-40 kDa	

## Applications

<b>Tested Applications:</b> WB, IHC, IF/ICC, ELISA	<b>Positive Controls:</b>
<b>Species Specificity:</b> human, mouse	<b>WB :</b> COLO 320 cells, Caco-2 cells, mouse colon tissue, mouse brain tissue
<b>Note-IHC: suggested antigen retrieval with TE buffer pH 9.0; (*) Alternatively, antigen retrieval may be performed with citrate buffer pH 6.0</b>	<b>IHC :</b> mouse small intestine tissue, human appendicitis tissue, human stomach cancer tissue
	<b>IF/ICC :</b> Caco-2 cells,

## Background Information

CDX2, also named as Homeobox protein CDX-2, is a 313 amino acid protein, which contains one homeobox DNA-binding domain and belongs to the Caudal homeobox family. CDX2 localizes in the nucleus and is involved in the transcriptional regulation of multiple genes expression in the intestinal epithelium. The relative expression of CDX1 to CDX2 protein may be important in the anterior to posterior patterning of the intestinal epithelium and in defining patterns of proliferation and differentiation along the crypt-villus axis. Both Cdx1 and Cdx2 genes must be expressed to reduce tumorigenic potential, to increase sensitivity to apoptosis, and to reduce cell migration, suggesting that the two genes control the normal phenotype by independent pathways.

## Storage

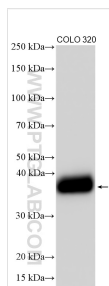
**Storage:**  
Store at -20°C. Stable for one year after shipment.  
**Storage Buffer:**  
PBS with 0.02% sodium azide and 50% glycerol pH 7.3.  
**Aliquoting is unnecessary for -20°C storage**

\*\*\* 20ul sizes contain 0.1% BSA

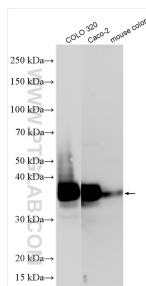
For technical support and original validation data for this product please contact:  
T: 1 (888) 4PTGLAB (1-888-478-4522) (toll free in USA), or 1(312) 455-8498 (outside USA)  
E: [proteintech@ptglab.com](mailto:proteintech@ptglab.com)  
W: [ptglab.com](http://ptglab.com)

This product is exclusively available under Proteintech Group brand and is not available to purchase from any other manufacturer.

## Selected Validation Data



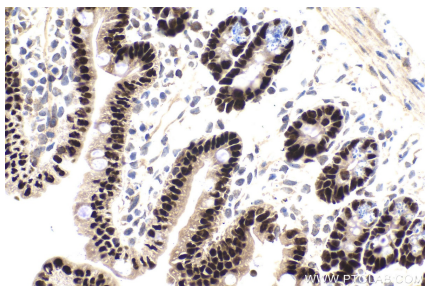
Various lysates were subjected to SDS PAGE followed by western blot with 22101-1-AP (CDX2 antibody) at dilution of 1:1000 incubated at room temperature for 1.5 hours.



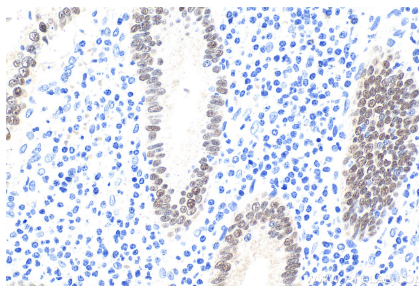
COLO 320 cells were subjected to SDS PAGE followed by western blot with 22101-1-AP (CDX2 antibody) at dilution of 1:3000 incubated at room temperature for 1.5 hours.



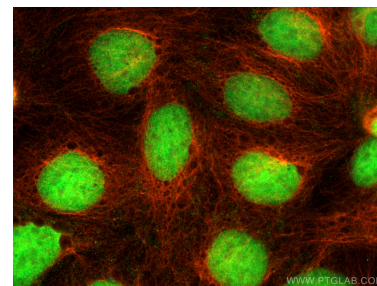
Immunohistochemical analysis of paraffin-embedded mouse small intestine tissue slide using 22101-1-AP (CDX2 antibody) at dilution of 1:1000 (under 10x lens). Heat mediated antigen retrieval with Tris-EDTA buffer (pH 9.0).



Immunohistochemical analysis of paraffin-embedded mouse small intestine tissue slide using 22101-1-AP (CDX2 antibody) at dilution of 1:1000 (under 40x lens). Heat mediated antigen retrieval with Tris-EDTA buffer (pH 9.0).



Immunohistochemical analysis of paraffin-embedded human appendicitis tissue slide using 22101-1-AP (CDX2 antibody) at dilution of 1:1000 (under 40x lens). Heat mediated antigen retrieval with Tris-EDTA buffer (pH 9.0).



Immunofluorescent analysis of (4% PFA) fixed Caco-2 cells using CDX2 antibody (22101-1-AP) at dilution of 1:400 and CoraLite®488-Conjugated Goat Anti-Rabbit IgG(H+L) (SA00013-2), Alpha Tubulin antibody (66031-1-Ig, Clone: 1E4C11, red).