

For Research Use Only

POMC Polyclonal antibody

Catalog Number: 22102-1-AP



Basic Information

Catalog Number: 22102-1-AP	GenBank Accession Number: BC065832	Purification Method: Antigen affinity purification
Size: 150ul , Concentration: 500 µg/ml by Nanodrop;	GeneID (NCBI): 5443	Recommended Dilutions: WB 1:500-1:1000 IHC 1:50-1:500
Source: Rabbit	Full Name: proopiomelanocortin	
Isotype: IgG	Calculated MW: 267 aa, 29 kDa	
Immunogen Catalog Number: AG17311	Observed MW: 35 kDa	

Applications

Tested Applications: IHC, WB, ELISA	Positive Controls:
Species Specificity: human	WB : mouse pituitary gland tissue, Transfected HEK-293 cells
Note-IHC: <i>suggested antigen retrieval with TE buffer pH 9.0; (*) Alternatively, antigen retrieval may be performed with citrate buffer pH 6.0</i>	IHC : human pituitary tissue,

Background Information

Pro-opiomelanocortin (POMC) is a prohormone that encodes multiple smaller peptide hormones within its structure. POMC plays important roles in many pathological and physiological processes, including regulating energy metabolism, immune reactions, and sexual functions. POMC expression differs quantitatively and qualitatively among most normal tissues. The large molecule of POMC is the source of several important biologically active substances. POMC can be cleaved enzymatically into the following peptides: d NPP, γ -MSH, ACTH, α -MSH, CLIP, Lipotropin β , Lipotropin γ , β -MSH, β endorphin and Met-enkephalin.

Storage

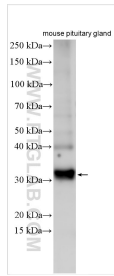
Storage:
Store at -20°C. Stable for one year after shipment.
Storage Buffer:
PBS with 0.02% sodium azide and 50% glycerol pH 7.3.
Aliquoting is unnecessary for -20°C storage

*** 20ul sizes contain 0.1% BSA

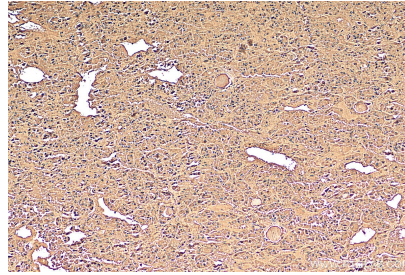
For technical support and original validation data for this product please contact:
T: 1 (888) 4PTGLAB (1-888-478-4522) (toll free in USA), or 1(312) 455-8498 (outside USA)
E: proteintech@ptglab.com
W: ptglab.com

This product is exclusively available under Proteintech Group brand and is not available to purchase from any other manufacturer.

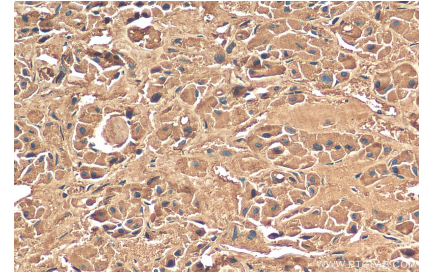
Selected Validation Data



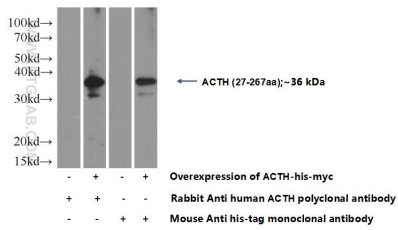
Various lysates were subjected to SDS PAGE followed by western blot with 22102-1-AP (POMC antibody) at dilution of 1:500 incubated at room temperature for 1.5 hours.



Immunohistochemical analysis of paraffin-embedded human pituitary tissue slide using 22102-1-AP (POMC antibody) at dilution of 1:200 (under 10x lens). Heat mediated antigen retrieval with Tris-EDTA buffer (pH 9.0).



Immunohistochemical analysis of paraffin-embedded human pituitary tissue slide using 22102-1-AP (POMC antibody) at dilution of 1:200 (under 40x lens). Heat mediated antigen retrieval with Tris-EDTA buffer (pH 9.0).



Transfected HEK-293 cells were subjected to SDS PAGE followed by western blot with 22102-1-AP (ACTH antibody at dilution of 1:2000 incubated at room temperature for 1.5 hours.