

For Research Use Only

# SLAIN1 Polyclonal antibody, PBS Only

Catalog Number: 22123-1-PBS



## Basic Information

**Catalog Number:**

22123-1-PBS

**Size:**

100ug, Concentration: 1 mg/ml by Nanodrop;

**Source:**

Rabbit

**Isotype:**

IgG

**Immunogen Catalog Number:**

AG4973

**GenBank Accession Number:**

BC045177

**GeneID (NCBI):**

122060

**UNIPROT ID:**

Q8ND83

**Full Name:**

SLAIN motif family, member 1

**Calculated MW:**

61 kDa

**Observed MW:**

65-70 kDa, 34-40 kDa

**Purification Method:**

Antigen affinity purification

## Applications

**Tested Applications:**

WB, IF/ICC, Indirect ELISA

**Species Specificity:**

human, mouse

## Storage

**Storage:**

Store at -80°C.

**Storage Buffer:**

PBS only, pH7.3

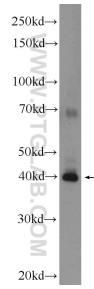
For technical support and original validation data for this product please contact:

T: 1 (888) 4PTGLAB (1-888-478-4522) (toll free in USA), or 1(312) 455-8498 (outside USA)

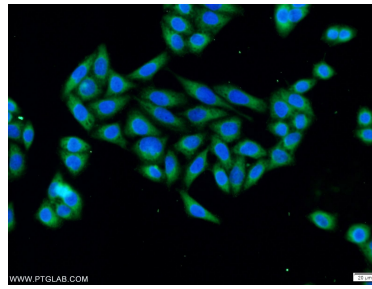
E: [proteintech@ptglab.com](mailto:proteintech@ptglab.com)  
W: [ptglab.com](http://ptglab.com)

This product is exclusively available under Proteintech Group brand and is not available to purchase from any other manufacturer.

## Selected Validation Data



HeLa cells were subjected to SDS PAGE followed by western blot with 22123-1-AP (SLAIN1 Antibody) at dilution of 1:600 incubated at room temperature for 1.5 hours. This data was developed using the same antibody clone with 22123-1-PBS in a different storage buffer formulation.



Immunofluorescent analysis of HeLa cells using 22123-1-AP (SLAIN1 antibody) at dilution of 1:50 and Alexa Fluor 488-conjugated AffiniPure Goat Anti-Rabbit IgG(H+L). This data was developed using the same antibody clone with 22123-1-PBS in a different storage buffer formulation.