

For Research Use Only

Ubiquilin 1 Polyclonal antibody, PBS Only

Catalog Number: 22126-1-PBS



Basic Information

Catalog Number:

22126-1-PBS

Size:

100ug, Concentration: 1 mg/ml by Nanodrop;

Source:

Rabbit

Isotype:

IgG

Immunogen Catalog Number:

AG17530

GenBank Accession Number:

BC010066

GeneID (NCBI):

29979

UNIPROT ID:

Q9UMX0

Full Name:

ubiquilin 1

Calculated MW:

589 aa, 63 kDa

Observed MW:

63-71 kDa

Purification Method:

Antigen affinity purification

Applications

Tested Applications:

WB, IF/ICC, Indirect ELISA

Species Specificity:

human, mouse, rat

Background Information

UBQLN1, also known as DSK2 or Ubiquilin 1, is an ubiquitin-like protein. It contains a N-terminal ubiquitin-like domain and a C-terminal ubiquitin-associated domain. They physically associate with both proteasomes and ubiquitin ligases, and thus are thought to functionally link the ubiquitination machinery to the proteasome to affect in vivo protein degradation. Ubiquilin has also been shown to modulate accumulation of presenilin proteins, and is found in lesions associated with Alzheimer's and Parkinson's disease. Two transcript variants encoding different isoforms have been found for this gene. Higher levels of ubiquilin-1 in the brain decreased malformation of the APP molecule which plays a key role in triggering Alzheimer's disease. Conversely, lower levels of ubiquilin-1 in the brain were associated with increased malformation of APP (PMID: 21852239). This antibody detects 70kD band of UBQLN1.

Storage

Storage:

Store at -80°C.

Storage Buffer:

PBS Only

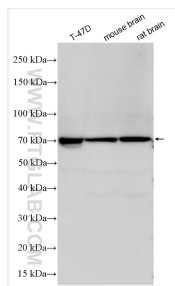
For technical support and original validation data for this product please contact:

T: 1 (888) 4PTGLAB (1-888-478-4522) (toll free in USA), or 1(312) 455-8498 (outside USA)

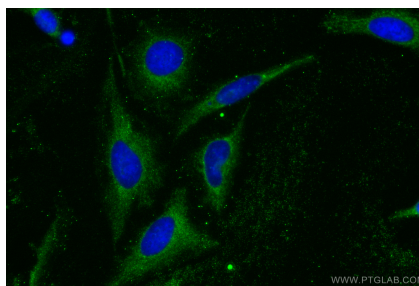
E: proteintech@ptglab.com
W: ptglab.com

This product is exclusively available under Proteintech Group brand and is not available to purchase from any other manufacturer.

Selected Validation Data



Various lysates were subjected to SDS PAGE followed by western blot with 22126-1-AP (Ubiquilin 1 antibody) at dilution of 1:2000 incubated at room temperature for 1.5 hours. This data was developed using the same antibody clone with 22126-1-PBS in a different storage buffer formulation.



Immunofluorescent analysis of (-20°C Methanol) fixed HeLa cells using Ubiquilin 1 antibody (22126-1-AP) at dilution of 1:400 and Coralite® 488-Conjugated AffiniPure Goat Anti-Rabbit IgG(H+L). This data was developed using the same antibody clone with 22126-1-PBS in a different storage buffer formulation.