

For Research Use Only

RCC1 Polyclonal antibody

Catalog Number: 22142-1-AP **6 Publications**



Basic Information

Catalog Number: 22142-1-AP	GenBank Accession Number: BC010067	Purification Method: Antigen affinity purification
Size: 150ul , Concentration: 500 µg/ml by Nanodrop and 380 µg/ml by Bradford method using BSA as the standard;	GeneID (NCBI): 1104	Recommended Dilutions: WB 1:1000-1:4000 IP 0.5-4.0 ug for IP and 1:500-1:2000 for WB
Source: Rabbit	Full Name: regulator of chromosome condensation 1	IHC 1:20-1:200
Isotype: IgG	Calculated MW: 421 aa, 45 kDa	IF 1:50-1:500
Immunogen Catalog Number: AG17569	Observed MW: 45-50 kDa	

Applications

Tested Applications: IF, IHC, IP, WB, ELISA	Positive Controls: WB : A431 cells, HEK-293 cells, NIH/3T3 cells
Cited Applications: IF, IHC, WB	IP : HEK-293 cells,
Species Specificity: monkey, human, mouse	IHC : human testis tissue, human small intestine tissue
Cited Species: human, mouse	IF : mouse brain tissue, A431 cells
Note-IHC: suggested antigen retrieval with TE buffer pH 9.0; (*) Alternatively, antigen retrieval may be performed with citrate buffer pH 6.0	

Background Information

CHC1, also named as RCC1, promotes the exchange of ran-bound gdp by gtp. It is involved in the regulation of onset of chromosome condensation in the S-phase. Phosphorylation of RCC1 on serines located in or near its nuclear localization signal activates RCC1 to generate RanGTP on mitotic chromosomes, which is required for spindle assembly and chromosome segregation. This antibody is a rabbit polyclonal antibody raised against residues near the C terminus of human RCC1.

Notable Publications

Author	Pubmed ID	Journal	Application
Yudong Song	30241030	Biomaterials	WB
Diana Vargas-Hurtado	31495584	Curr Biol	IF
Lijun Qiao	29789527	Cell Death Dis	IHC

Storage

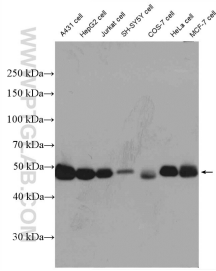
Storage:
Store at -20°C. Stable for one year after shipment.
Storage Buffer:
PBS with 0.02% sodium azide and 50% glycerol pH 7.3.
Aliquoting is unnecessary for -20°C storage

*** 20ul sizes contain 0.1% BSA

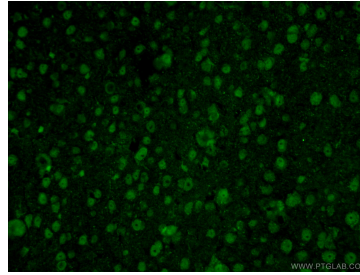
For technical support and original validation data for this product please contact:
T: 1 (888) 4PTGLAB (1-888-478-4522) (toll free in USA), or 1(312) 455-8498 (outside USA)
E: proteintech@ptglab.com
W: ptglab.com

This product is exclusively available under Proteintech Group brand and is not available to purchase from any other manufacturer.

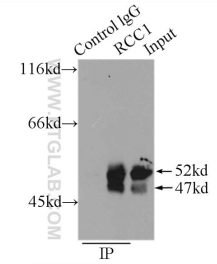
Selected Validation Data



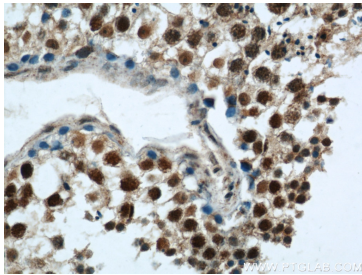
A431 cells were subjected to SDS PAGE followed by western blot with 22142-1-AP (RCC1 antibody) at dilution of 1:2000 incubated at room temperature for 1.5 hours.



Immunofluorescent analysis of (4% PFA) fixed mouse brain tissue using 22142-1-AP (RCC1 antibody) at dilution of 1:50 and Alexa Fluor 488-Conjugated AffiniPure Goat Anti-Rabbit IgG(H+L).



IP Result of anti-RCC1 (IP:22142-1-AP, 3ug; Detection:22142-1-AP 1:1000) with HEK-293 cells lysate 1000ug.



Immunohistochemical analysis of paraffin-embedded human testis using 22142-1-AP (RCC1 antibody) at dilution of 1:50 (under 40x lens).