

For Research Use Only

CACNA2D2 Polyclonal antibody

Catalog Number: 22145-1-AP

Featured Product



Basic Information

Catalog Number:

22145-1-AP

Size:

150ul, Concentration: 850 ug/ml by Nanodrop;

Source:

Rabbit

Isotype:

IgG

Immunogen Catalog Number:

AG17580

GenBank Accession Number:

BC152438

GeneID (NCBI):

9254

UNIPROT ID:

Q9NY47

Full Name:

calcium channel, voltage-dependent, alpha 2/delta subunit 2

Calculated MW:

1145 aa, 129 kDa

Observed MW:

100-112 kDa

Purification Method:

Antigen affinity purification

Recommended Dilutions:

WB 1:500-1:2000

Applications

Tested Applications:

WB, ELISA

Species Specificity:

human, mouse, rat

Positive Controls:

WB : mouse brain tissue, SH-SY5Y cells, rat brain tissue

Background Information

CACNA2D2 (calcium voltage-gated channel auxiliary subunit alpha2delta 2), also known as CASVDD. It is expected to be located in cell membrane. The protein is predominantly present in cerebellar cortex. Present in various lung tumor cell lines, while it is absent in normal lung (at protein level). Highly expressed in heart, lung, testis, pancreas and skeletal muscle. Also expressed in kidney, liver, placenta and brain (PMID: 10766861). The alpha-2/delta subunit of voltage-dependent calcium channels regulates calcium current density and activation/inactivation kinetics of the calcium channel (PMID: 15111129). The molecular weight of CACNA2D2 is 129 kDa, and it can recognize other isoforms, which can be cut into fragments.

Storage

Storage:

Store at -20°C. Stable for one year after shipment.

Storage Buffer:

PBS with 0.02% sodium azide and 50% glycerol pH 7.3.

Aliquoting is unnecessary for -20°C storage

*** 20ul sizes contain 0.1% BSA

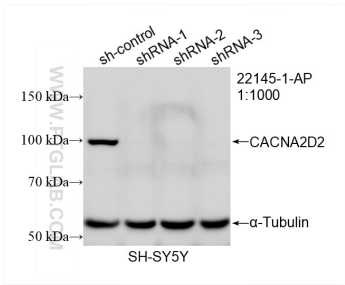
For technical support and original validation data for this product please contact:

T: 1 (888) 4PTGLAB (1-888-478-4522) (toll free in USA), or 1(312) 455-8498 (outside USA)

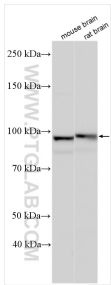
E: proteintech@ptglab.com
W: ptglab.com

This product is exclusively available under Proteintech Group brand and is not available to purchase from any other manufacturer.

Selected Validation Data



WB result of CACNA2D2 antibody (22145-1-AP; 1:1000; incubated at room temperature for 1.5 hours) with sh-Control and sh-CACNA2D2 transfected SH-SY5Y cells.



Various lysates were subjected to SDS PAGE followed by western blot with 22145-1-AP (CACNA2D2 antibody) at dilution of 1:1000 incubated at room temperature for 1.5 hours.