

For Research Use Only

ADAM5 Polyclonal antibody, PBS Only

Catalog Number: 22147-1-PBS



Basic Information

Catalog Number:

22147-1-PBS

Size:

100ug, Concentration: 1 mg/ml by Nanodrop;

Source:

Rabbit

Isotype:

IgG

Immunogen Catalog Number:

AG17590

GenBank Accession Number:

BC067864

GeneID (NCBI):

255926

Full Name:

ADAM metalloproteinase domain 5 pseudogene

Calculated MW:

412 aa, 47 kDa

Observed MW:

36-50 kDa

Purification Method:

Antigen affinity purification

Applications

Tested Applications:

WB, IHC, IF/ICC, Indirect ELISA

Species Specificity:

human

Background Information

ADAM5 (putative disintegrin and metalloproteinase domain-containing protein 5) is also named as ADAM5P, TMDC2 (tMDCII). The tMDC II, abundantly expressed, sperm surface MDC proteins identified in rodent and macaque systems, is also nonfunctional in the human (PMID:10417343). It has 7 isoforms produced by alternative splicing. It is expressed in testis highly by northern blot. This antibody is specific to ADAM5.

Storage

Storage:

Store at -80°C.

Storage Buffer:

PBS Only

For technical support and original validation data for this product please contact:

T: 1 (888) 4PTGLAB (1-888-478-4522) (toll free in USA), or 1(312) 455-8498 (outside USA)

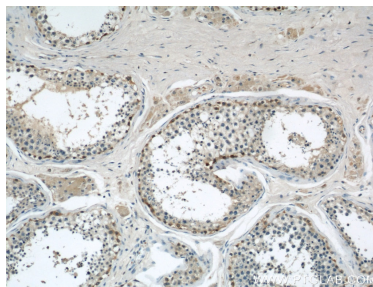
E: proteintech@ptglab.com
W: ptglab.com

This product is exclusively available under Proteintech Group brand and is not available to purchase from any other manufacturer.

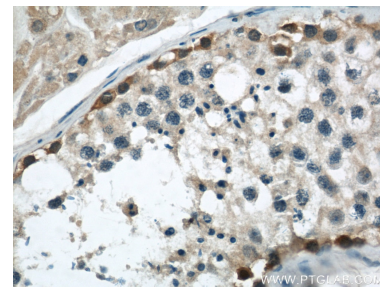
Selected Validation Data



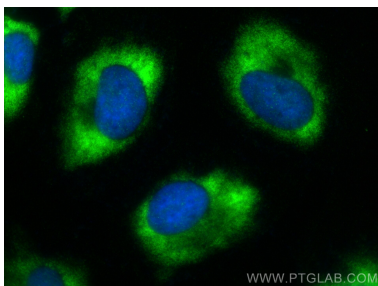
HeLa cells were subjected to SDS PAGE followed by western blot with 22147-1-AP (ADAM5 antibody) at dilution of 1:1000 incubated at room temperature for 1.5 hours. This data was developed using the same antibody clone with 22147-1-PBS in a different storage buffer formulation.



Immunohistochemical analysis of paraffin-embedded human testis using 22147-1-AP (ADAM5 antibody) at dilution of 1:50 (under 10x lens). This data was developed using the same antibody clone with 22147-1-PBS in a different storage buffer formulation.



Immunohistochemical analysis of paraffin-embedded human testis using 22147-1-AP (ADAM5 antibody) at dilution of 1:50 (under 40x lens). This data was developed using the same antibody clone with 22147-1-PBS in a different storage buffer formulation.



Immunofluorescent analysis of (-20°C Ethanol) fixed HeLa cells using ADAM5 antibody (22147-1-AP) at dilution of 1:400 and CoraLite®488-Conjugated Goat Anti-Rabbit IgG(H+L) (SA00013-2). This data was developed using the same antibody clone with 22147-1-PBS in a different storage buffer formulation.