

For Research Use Only

PYCR1 Polyclonal antibody

Catalog Number: 22150-1-AP

Featured Product

1 Publications



Basic Information

Catalog Number:
22150-1-AP

Size:
150ul, Concentration: 400 µg/ml by Nanodrop and 327 µg/ml by Bradford method using BSA as the standard;

Source:
Rabbit

Isotype:
IgG

Immunogen Catalog Number:
AG17745

GenBank Accession Number:
BC022244

GeneID (NCBI):
5831

Full Name:
pyrroline-5-carboxylate reductase 1

Calculated MW:
319 aa, 33 kDa

Observed MW:
33 kDa

Purification Method:
Antigen affinity purification

Recommended Dilutions:
WB 1:500-1:2000
IP 0.5-4.0 ug for IP and 1:500-1:2000 for WB
IF 1:50-1:500

Applications

Tested Applications:
IF, IP, WB, ELISA

Cited Applications:
WB

Species Specificity:
human, mouse, rat

Cited Species:
human

Positive Controls:

WB: HeLa cells, COLO 320 cells

IP: HeLa cells,

IF: HeLa cells,

Background Information

PYCR1, also named as P5CR1, belongs to the pyrroline-5-carboxylate reductase family. It is a housekeeping enzyme that catalyzes the last step in proline biosynthesis. PYCR1 can utilize both NAD and NADP, but has higher affinity for NAD. It is involved in the cellular response to oxidative stress. Mutation in PYCR1 will cause ARCL type II (ARCL2B). Some mutation will cause DeBary syndrome (DBS) which is characterized by progeroid features, ophthalmological abnormalities, intrauterine growth retardation, and cutis laxa. The MW of PYCR1 is about 33-35kd. This antibody may have cross reaction to PYCR2 due to the high homology.

Notable Publications

Author	Pubmed ID	Journal	Application
Emily J Kay	35760868	Nat Metab	WB

Storage

Storage:

Store at -20°C. Stable for one year after shipment.

Storage Buffer:

PBS with 0.02% sodium azide and 50% glycerol pH 7.3.

Aliquoting is unnecessary for -20°C storage

*** 20ul sizes contain 0.1% BSA

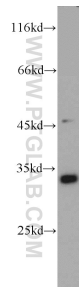
For technical support and original validation data for this product please contact:

T: 1 (888) 4PTGLAB (1-888-478-4522) (toll free in USA), or 1(312) 455-8498 (outside USA)

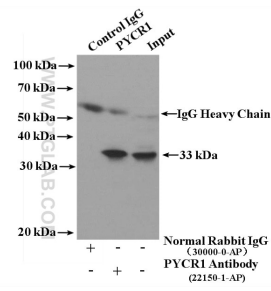
E: proteintech@ptglab.com
W: ptglab.com

This product is exclusively available under Proteintech Group brand and is not available to purchase from any other manufacturer.

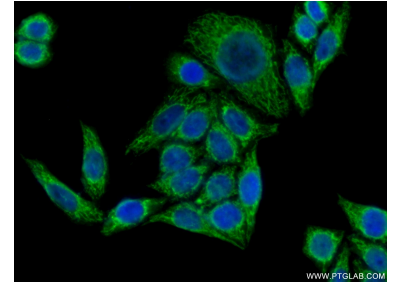
Selected Validation Data



HeLa cells were subjected to SDS PAGE followed by western blot with 22150-1-AP (PYCR1 antibody) at dilution of 1:1000 incubated at room temperature for 1.5 hours.



IP Result of anti-PYCR1 (IP:22150-1-AP, 4ug; Detection:22150-1-AP 1:1000) with HeLa cells lysate 3200ug.



Immunofluorescent analysis of (10% Formaldehyde) fixed HeLa cells using 22150-1-AP (PYCR1 antibody) at dilution of 1:50 and Alexa Fluor 488-conjugated AffiniPure Goat Anti-Rabbit IgG(H+L).