

For Research Use Only

KCNMA1 Polyclonal antibody, PBS Only

Catalog Number: 22158-1-PBS



Basic Information

Catalog Number:

22158-1-PBS

Size:

100ug, Concentration: 1 mg/ml by Nanodrop;

Source:

Rabbit

Isotype:

IgG

Immunogen Catalog Number:

AG17802

GenBank Accession Number:

BC137115

GeneID (NCBI):

3778

UNIPROT ID:

Q12791

Full Name:

potassium large conductance calcium-activated channel, subfamily M, alpha member 1

Calculated MW:

1236 aa, 138 kDa

Observed MW:

~130 kDa

Purification Method:

Antigen affinity purification

Applications

Tested Applications:

WB, IHC, IF-P, Indirect ELISA

Species Specificity:

human, mouse, rat

Background Information

Calcium-activated potassium channel subunit alpha-1 also known as large conductance calcium-activated potassium channel, subfamily M, alpha member 1 (KCa1.1), or BK channel alpha subunit, is a voltage-gated potassium channel encoded by the KCNMA1 gene and characterized by their large conductance of potassium ions (K⁺) through cell membranes. KCNMA1 is widely distributed in human cell membranes, especially in muscle cells and neurons. They regulate the excitability of cells through sensitivity to calcium ions (Ca²⁺) and voltage, thereby affecting key physiological processes such as muscle contraction and nerve signal transduction.

Storage

Storage:

Store at -80°C.

Storage Buffer:

PBS only, pH7.3

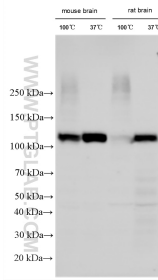
For technical support and original validation data for this product please contact:

T: 1 (888) 4PTGLAB (1-888-478-4522) (toll free in USA), or 1(312) 455-8498 (outside USA)

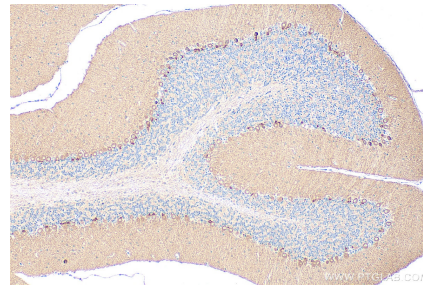
E: proteintech@ptglab.com
W: ptglab.com

This product is exclusively available under Proteintech Group brand and is not available to purchase from any other manufacturer.

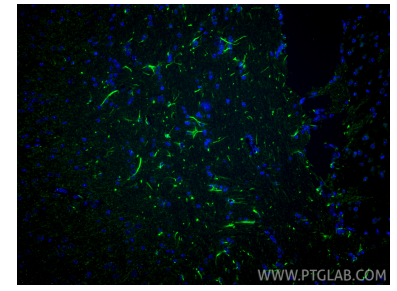
Selected Validation Data



Various lysates were subjected to SDS PAGE followed by western blot with 22158-1-AP (KCNMA1 antibody) at dilution of 1:3000 incubated at room temperature for 1.5 hours. This data was developed using the same antibody clone with 22158-1-PBS in a different storage buffer formulation.



Immunohistochemical analysis of paraffin-embedded mouse cerebellum tissue slide using 22158-1-AP (KCNMA1 antibody) at dilution of 1:200 (under 10x lens). Heat mediated antigen retrieval with Tris-EDTA buffer (pH 9.0). This data was developed using the same antibody clone with 22158-1-PBS in a different storage buffer formulation.



Immunofluorescent analysis of (4% PFA) fixed paraffin-embedded mouse brain tissue using KCNMA1 antibody (22158-1-AP) at dilution of 1:200 and CoraLite®488-Conjugated Goat Anti-Rabbit IgG(H+L) (SA00013-2). Heat mediated antigen retrieval with Tris-EDTA buffer (pH 9.0). This data was developed using the same antibody clone with 22158-1-PBS in a different storage buffer formulation.