

For Research Use Only

IQGAP1 Polyclonal antibody

Catalog Number: 22167-1-AP

Featured Product

14 Publications



Basic Information

Catalog Number:

22167-1-AP

Size:

150ul, Concentration: 500 ug/ml by Nanodrop;

Source:

Rabbit

Isotype:

IgG

Immunogen Catalog Number:

AG17821

GenBank Accession Number:

BC151834

GeneID (NCBI):

8826

ENSEMBL Gene ID:

ENSG00000140575

UNIPROT ID:

P46940

Full Name:

IQ motif containing GTPase activating protein 1

Calculated MW:

189 kDa

Observed MW:

190-195 kDa

Purification Method:

Antigen affinity purification

Recommended Dilutions:

WB 1:2000-1:10000

IP 0.5-4.0 ug for 1.0-3.0 mg of total protein lysate

IHC 1:200-1:1000

IF/ICC 1:200-1:800

Applications

Tested Applications:

WB, IHC, IF/ICC, FC (Intra), IP, ELISA

Cited Applications:

WB, IHC, IF, IP

Species Specificity:

human, mouse

Cited Species:

human, mouse

Note-IHC: suggested antigen retrieval with TE buffer pH 9.0; (*) Alternatively, antigen retrieval may be performed with citrate buffer pH 6.0

Positive Controls:

WB: A549 cells, NIH/3T3 cells, SGC-7901 cells, HEK-293 cells, HeLa cells, HepG2 cells

IP: HeLa cells,

IHC: human breast cancer tissue, human liver cancer tissue, human colon cancer tissue

IF/ICC: HeLa cells, A549 cells, MCF-7 cells

Background Information

IQGAP1 is a member of a family of scaffolding proteins that interact with signaling and structural molecules. It localizes to sites of cell-cell contact in epithelial cells and regulates distinct cellular processes including cell adhesion, cell migration, extracellular signals through interacting with numerous protein. Multiple studies have shown that IQGAP1 is up-regulated in many human malignancies, such as lung cancer, ovarian cancer, colon cancer, breast cancer, melanoma and HCC. And IQGAP1 plays a critical role in cancer cell invasion.

Notable Publications

Author	Pubmed ID	Journal	Application
Emilie Renaud	36217175	Mol Cancer	WB
Yunfeng Hu	36209218	Cell Death Dis	WB
Qingqing Dai	36320006	BMC Cancer	IHC

Storage

Storage:

Store at -20°C. Stable for one year after shipment.

Storage Buffer:

PBS with 0.02% sodium azide and 50% glycerol pH 7.3.

Aliquoting is unnecessary for -20°C storage

*** 20ul sizes contain 0.1% BSA

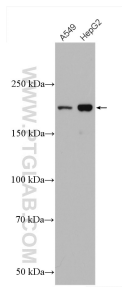
For technical support and original validation data for this product please contact:

T: 1 (888) 4PTGLAB (1-888-478-4522) (toll free in USA), or 1(312) 455-8498 (outside USA)

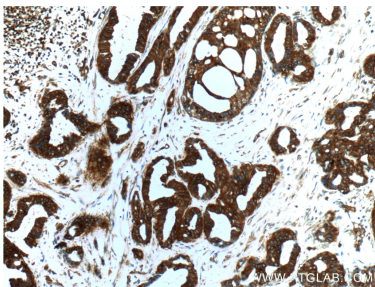
E: proteintech@ptglab.com
W: ptglab.com

This product is exclusively available under Proteintech Group brand and is not available to purchase from any other manufacturer.

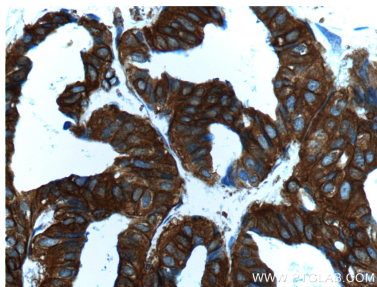
Selected Validation Data



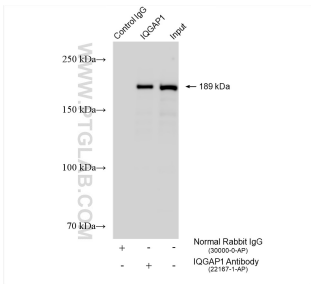
Various lysates were subjected to SDS PAGE followed by western blot with 22167-1-AP (IQGAP1 antibody) at dilution of 1:5000 incubated at room temperature for 1.5 hours.



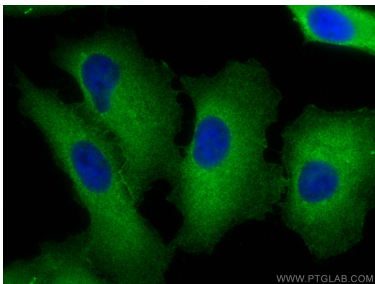
Immunohistochemical analysis of paraffin-embedded human breast cancer tissue slide using 22167-1-AP (IQGAP1 Antibody) at dilution of 1:200 (under 10x lens).



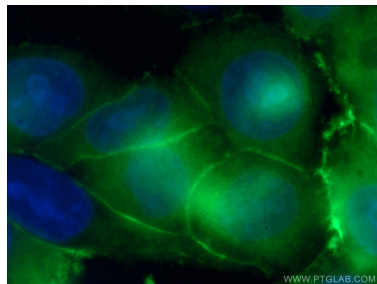
Immunohistochemical analysis of paraffin-embedded human breast cancer tissue slide using 22167-1-AP (IQGAP1 Antibody) at dilution of 1:200 (under 40x lens).



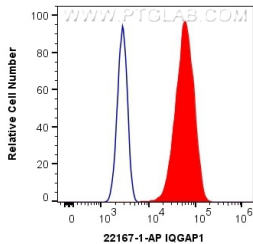
IP result of anti-IQGAP1 (IP:22167-1-AP, 4ug; Detection:22167-1-AP 1:8000) with HeLa cells lysate 1085 ug.



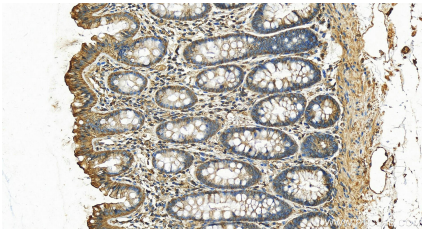
Immunofluorescent analysis of (-20°C Methanol) fixed A549 cells using IQGAP1 antibody (22167-1-AP) at dilution of 1:200 and CoraLite®488-Conjugated AffiniPure Goat Anti-Rabbit IgG(H+L).



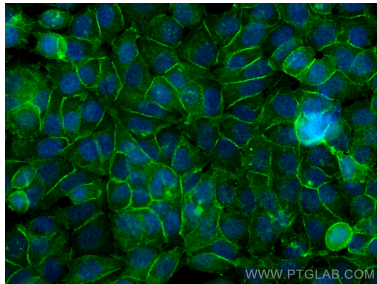
Immunofluorescent analysis of (-20°C Ethanol) fixed HeLa cells using 22167-1-AP (IQGAP1 antibody) at dilution of 1:400 and Alexa Fluor 488-conjugated AffiniPure Goat Anti-Rabbit IgG(H+L).



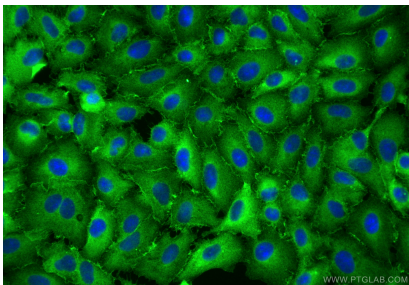
1X10⁶ HeLa cells were intracellularly stained with 0.4 ug Anti-Human IQGAP1 (22167-1-AP) and CoraLite®488-Conjugated AffiniPure Goat Anti-Rabbit IgG(H+L) at dilution 1:1000 (red), or 0.4 ug Isotype Control. Cells were fixed with 4% PFA and permeabilized with Flow Cytometry Perm Buffer (PF00011-C).



Immunohistochemical analysis of paraffin-embedded human normal colon slide using 22167-1-AP (IQGAP1 antibody) at dilution of 1:1000 (under 20x lens). Heat mediated antigen retrieval with Tris-EDTA buffer (pH 9.0).



Immunofluorescent analysis of (4% PFA) fixed MCF-7 cells using IQGAP1 antibody (22167-1-AP) at dilution of 1:200 and Multi-rAb CoraLite® Plus 488-Goat Anti-Rabbit Recombinant Secondary Antibody (H+L) (RGAR002).



Immunofluorescent analysis of (-20°C Methanol)
fixed A549 cells using IQGAP1 antibody (22167-1-
AP) at dilution of 1:200 and Multi-rAb CoraLite ®
Plus 488-Goat Anti-Rabbit Recombinant Secondary
Antibody (H+L) (RGAR002).