

For Research Use Only

# IQGAP1 Polyclonal antibody, PBS Only

Catalog Number: 22167-1-PBS

Featured Product



## Basic Information

**Catalog Number:**

22167-1-PBS

**Size:**

100ug, Concentration: 1mg/ml by Nanodrop;

**Source:**

Rabbit

**Isotype:**

IgG

**Immunogen Catalog Number:**

AG17821

**GenBank Accession Number:**

BC151834

**GeneID (NCBI):**

8826

**ENSEMBL Gene ID:**

ENSG00000140575

**UNIPROT ID:**

P46940

**Full Name:**

IQ motif containing GTPase activating protein 1

**Calculated MW:**

189 kDa

**Observed MW:**

190-195 kDa

**Purification Method:**

Antigen affinity purification

## Applications

**Tested Applications:**

WB, IHC, IF/ICC, FC (Intra), IP, ELISA

**Species Specificity:**

human, mouse

## Background Information

IQGAP1 is a member of a family of scaffolding proteins that interact with signaling and structural molecules. It localizes to sites of cell-cell contact in epithelial cells and regulates distinct cellular processes including cell adhesion, cell migration, extracellular signals through interacting with numerous protein. Multiple studies have shown that IQGAP1 is up-regulated in many human malignancies, such as lung cancer, ovarian cancer, colon cancer, breast cancer, melanoma and HCC. And IQGAP1 plays a critical role in cancer cell invasion.

## Storage

**Storage:**

Store at -80°C.

**Storage Buffer:**

PBS only, pH7.3

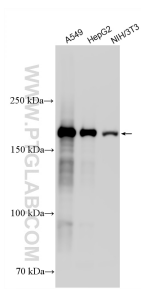
For technical support and original validation data for this product please contact:

T: 1 (888) 4PTGLAB (1-888-478-4522) (toll free in USA), or 1(312) 455-8498 (outside USA)

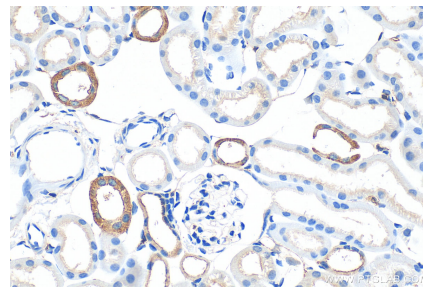
E: [proteintech@ptglab.com](mailto:proteintech@ptglab.com)  
W: [ptglab.com](http://ptglab.com)

This product is exclusively available under Proteintech Group brand and is not available to purchase from any other manufacturer.

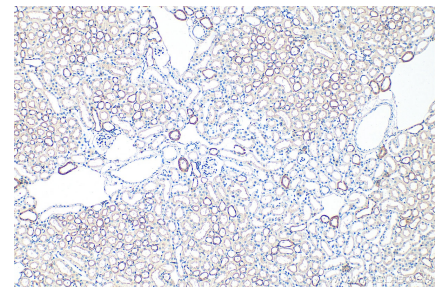
## Selected Validation Data



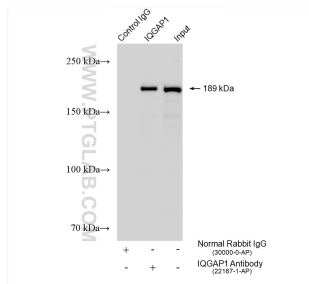
Various lysates were subjected to SDS PAGE followed by western blot with 22167-1-AP (IQGAP1 antibody) at dilution of 1:5000 incubated at room temperature for 1.5 hours. This data was developed using the same antibody clone with 22167-1-PBS in a different storage buffer formulation.



Immunohistochemical analysis of paraffin-embedded mouse kidney tissue slide using 22167-1-AP (IQGAP1 antibody) at dilution of 1:1000 (under 40x lens). Heat mediated antigen retrieval with Tris-EDTA buffer (pH 9.0). This data was developed using the same antibody clone with 22167-1-PBS in a different storage buffer formulation.



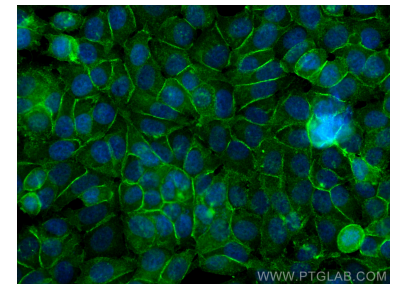
Immunohistochemical analysis of paraffin-embedded mouse kidney tissue slide using 22167-1-AP (IQGAP1 antibody) at dilution of 1:1000 (under 10x lens). Heat mediated antigen retrieval with Tris-EDTA buffer (pH 9.0). This data was developed using the same antibody clone with 22167-1-PBS in a different storage buffer formulation.



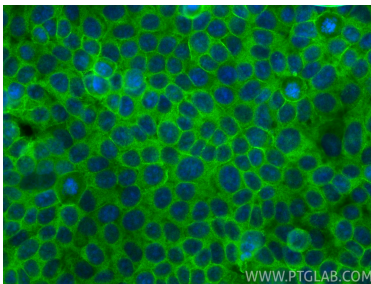
IP result of anti-IQGAP1 (IP:22167-1-AP, 4ug; Detection:22167-1-AP 1:8000) with HeLa cells lysate 1085 ug. This data was developed using the same antibody clone with 22167-1-PBS in a different storage buffer formulation.



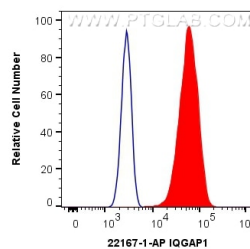
Immunofluorescent analysis of (-20°C Methanol) fixed A549 cells using IQGAP1 antibody (22167-1-AP) at dilution of 1:400 and CoraLite® 488-Conjugated AffiniPure Goat Anti-Rabbit IgG(H+L).



Immunofluorescent analysis of (4% PFA) fixed MCF-7 cells using IQGAP1 antibody (22167-1-AP) at dilution of 1:200 and Multi-rAb CoraLite® Plus 488-Goat Anti-Rabbit Recombinant Secondary Antibody (H+L) (RGAR002). This data was developed using the same antibody clone with 22167-1-PBS in a different storage buffer formulation.



Immunofluorescent analysis of (-20°C Methanol) fixed MCF-7 cells using IQGAP1 antibody (22167-1-AP) at dilution of 1:400 and CoraLite® 488-Conjugated Goat Anti-Rabbit IgG(H+L) (SA00013-2). This data was developed using the same antibody clone with 22167-1-PBS in a different storage buffer formulation.



1X10<sup>6</sup> HeLa cells were intracellularly stained with 0.4 ug Anti-Human IQGAP1 (22167-1-AP) and CoraLite® 488-Conjugated AffiniPure Goat Anti-Rabbit IgG(H+L) at dilution 1:1000 (red), or 0.4 ug Isotype Control. Cells were fixed with 4% PFA and permeabilized with Flow Cytometry Perm Buffer. This data was developed using the same antibody clone with 22167-1-PBS in a different storage buffer formulation.