

For Research Use Only

G6PC Polyclonal antibody

Catalog Number: 22169-1-AP

41 Publications



Basic Information

Catalog Number: 22169-1-AP	GenBank Accession Number: BC130478	Purification Method: Antigen affinity purification
Size: 150ul , Concentration: 650 ug/ml by Nanodrop and 300 ug/ml by Bradford method using BSA as the standard;	GeneID (NCBI): 2538	Recommended Dilutions: IHC 1:50-1:500
Source: Rabbit	UNIPROT ID: P35575	
Isotype: IgG	Full Name: glucose-6-phosphatase, catalytic subunit	
Immunogen Catalog Number: AG17839	Calculated MW: 357 aa, 40 kDa	

Applications

Tested Applications: IHC, ELISA	Positive Controls: IHC : human liver tissue,
Cited Applications: IHC	
Species Specificity: human, mouse	
Cited Species: human, mouse, rat	
Note-IHC: suggested antigen retrieval with TE buffer pH 9.0; (*) Alternatively, antigen retrieval may be performed with citrate buffer pH 6.0	

Background Information

Glucose-6-phosphatase- α (G6PC) is a key enzyme in glucose homeostasis that catalyzes the hydrolysis of glucose-6-phosphate to glucose and phosphate in the terminal step of gluconeogenesis and glycogenolysis. G6PC activity is restricted to the liver, the kidney cortex and the small intestine and confers on these three organs the capacity to release glucose into the systemic circulation (PMID: 21983240). The encoded enzyme is anchored to the ER by nine transmembrane helices with the amino (N)-terminus in the lumen and the carboxyl (C)-terminus in the cytoplasm (PMID: 15542400).

Notable Publications

Author	Pubmed ID	Journal	Application
Linyi Shu	34581420	Int J Mol Med	
Yong Zhang	32970960	Can J Physiol Pharmacol	
Shuyue Wang	31526292	Am J Physiol Endocrinol Metab	

Storage

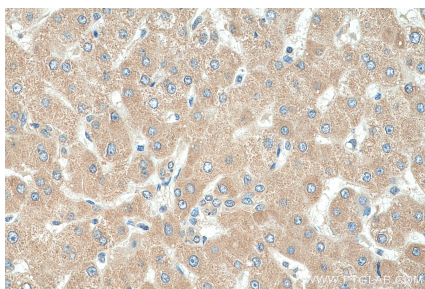
Storage:
Store at -20°C. Stable for one year after shipment.
Storage Buffer:
PBS with 0.02% sodium azide and 50% glycerol
Aliquoting is unnecessary for -20°C storage

*** 20ul sizes contain 0.1% BSA

For technical support and original validation data for this product please contact:
T: 1 (888) 4PTGLAB (1-888-478-4522) (toll free in USA), or 1(312) 455-8498 (outside USA)
E: proteintech@ptglab.com
W: ptglab.com

This product is exclusively available under Proteintech Group brand and is not available to purchase from any other manufacturer.

Selected Validation Data



Immunohistochemical analysis of paraffin-embedded human liver tissue slide using 22169-1-AP (G6PC antibody) at dilution of 1:200 (under 40x lens). Heat mediated antigen retrieval with Tris-EDTA buffer (pH 9.0).