

For Research Use Only

Paxillin Polyclonal antibody

Catalog Number: 22172-1-AP

6 Publications



Basic Information

Catalog Number:

22172-1-AP

Size:

150ul, Concentration: 600 µg/ml by Nanodrop and 333 µg/ml by Bradford method using BSA as the standard;

Source:

Rabbit

Isotype:

IgG

Immunogen Catalog Number:

AG17702

GenBank Accession Number:

BC136787

GeneID (NCBI):

5829

UNIPROT ID:

P49023

Full Name:

paxillin

Calculated MW:

591 aa, 65 kDa

Purification Method:

Antigen affinity purification

Recommended Dilutions:

WB 1:200-1:1000

IHC 1:20-1:200

IF/ICC 1:20-1:200

Applications

Tested Applications:

WB, IF, IHC, ELISA

Cited Applications:

WB, IHC

Species Specificity:

human, Canine, mouse

Cited Species:

human

Note-IHC: suggested antigen retrieval with TE buffer pH 9.0; (*) Alternatively, antigen retrieval may be performed with citrate buffer pH 6.0

Positive Controls:

WB : RAW 264.7 cells,

IHC : human breast cancer tissue, human stomach cancer tissue

IF/ICC : MDCK cells,

Notable Publications

Author	Pubmed ID	Journal	Application
ShanWang	34599264	Sci Rep	WB
Lai Jin	30849520	Cell Signal	WB
Lupeng Wang	31173185	Int J Oncol	WB

Storage

Storage:

Store at -20°C. Stable for one year after shipment.

Storage Buffer:

PBS with 0.02% sodium azide and 50% glycerol pH 7.3.

Aliquoting is unnecessary for -20°C storage

*** 20ul sizes contain 0.1% BSA

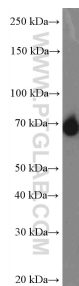
For technical support and original validation data for this product please contact:

T: 1 (888) 4PTGLAB (1-888-478-4522) (toll free in USA), or 1(312) 455-8498 (outside USA)

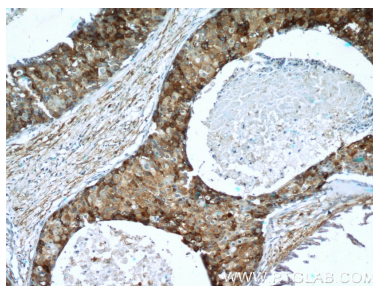
E: proteintech@ptglab.com
W: ptglab.com

This product is exclusively available under Proteintech Group brand and is not available to purchase from any other manufacturer.

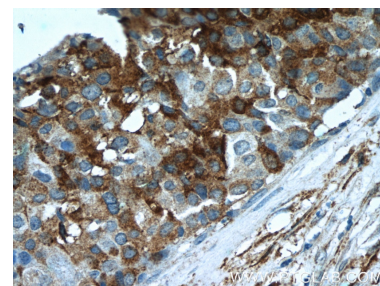
Selected Validation Data



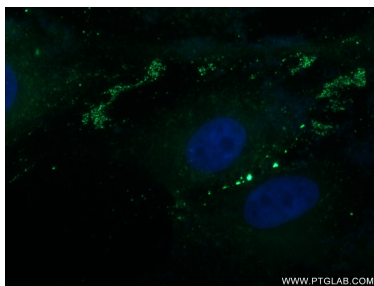
RAW 264.7 cells were subjected to SDS PAGE followed by western blot with 22172-1-AP (Paxillin antibody at dilution of 1:300 incubated at room temperature for 1.5 hours.



Immunohistochemical analysis of paraffin-embedded human breast cancer tissue slide using 22172-1-AP (Paxillin antibody at dilution of 1:50 (under 10x lens).



Immunohistochemical analysis of paraffin-embedded human breast cancer tissue slide using 22172-1-AP (Paxillin antibody at dilution of 1:50 (under 40x lens).



Immunofluorescent analysis of MDCK cells using 22172-1-AP (Paxillin antibody) at dilution of 1:50 and Alexa Fluor 488-conjugated AffiniPure Goat Anti-Rabbit IgG(H+L).