

For Research Use Only

GLP2R Polyclonal antibody

Catalog Number: 22187-1-AP



Basic Information

Catalog Number: 22187-1-AP	GenBank Accession Number: BC096262	Purification Method: Antigen affinity purification
Size: 150ul , Concentration: 800 µg/ml by Nanodrop and 433 µg/ml by Bradford method using BSA as the standard;	GeneID (NCBI): 9340	Recommended Dilutions: WB 1:500-1:1000
Source: Rabbit	Full Name: glucagon-like peptide 2 receptor	
Isotype: IgG	Calculated MW: 553 aa, 63 kDa	
Immunogen Catalog Number: AG16745	Observed MW: 70 kDa	

Applications

Tested Applications: WB, ELISA	Positive Controls: WB : mouse liver tissue, rat liver tissue
Species Specificity: human, mouse, rat	

Background Information

Glucagon-like peptide 2 receptor (GLP2R), a member of the G-protein-coupled receptor family, is closely related to the glucagon receptor and binds to glucagon-like peptide 2 (GLP2). GLP2 is a 33-amino-acid peptide hormone that exerts various actions in the gastrointestinal tract (PMID: 10828489).

Storage

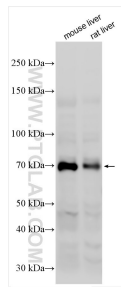
Storage:
Store at -20°C. Stable for one year after shipment.
Storage Buffer:
PBS with 0.02% sodium azide and 50% glycerol pH 7.3.
Aliquoting is unnecessary for -20°C storage

***** 20ul sizes contain 0.1% BSA**

For technical support and original validation data for this product please contact:
T: 1 (888) 4PTGLAB (1-888-478-4522) (toll free in USA), or 1(312) 455-8498 (outside USA) E: proteintech@ptglab.com
W: ptglab.com

This product is exclusively available under Proteintech Group brand and is not available to purchase from any other manufacturer.

Selected Validation Data



Various lysates were subjected to SDS PAGE followed by western blot with 22187-1-AP (GLP2R antibody) at dilution of 1:800 incubated at room temperature for 1.5 hours.